

# AI TEFs & EDIHs: Getting to Know Each Other

Moderated by Yves Paindaveine, DG CNECT

Monday 25 March 2024

# Some general points



The meeting will be recorded and made available online.



Please keep your microphone muted when not speaking.



Please raise your hand when you wish to speak. Unmute your mic when the chair invites you to take the floor.

# AI Testing & Experimentation Facilities & EDIHs: Getting to Know Each Other

14:00

Welcome & Introduction



14:10

By sector/topic, presentation of TEF & a typical EDIH  
in the same



15:30

Discussion

15:50

Next Steps & Conclusions

16:00

Closing

- ✓ Please **mute** yourself when you are not talking
- ✓ Share your webcam **video** only when you are talking
- ✓ Use the **chat** for questions, comments and to indicate that you wish to speak



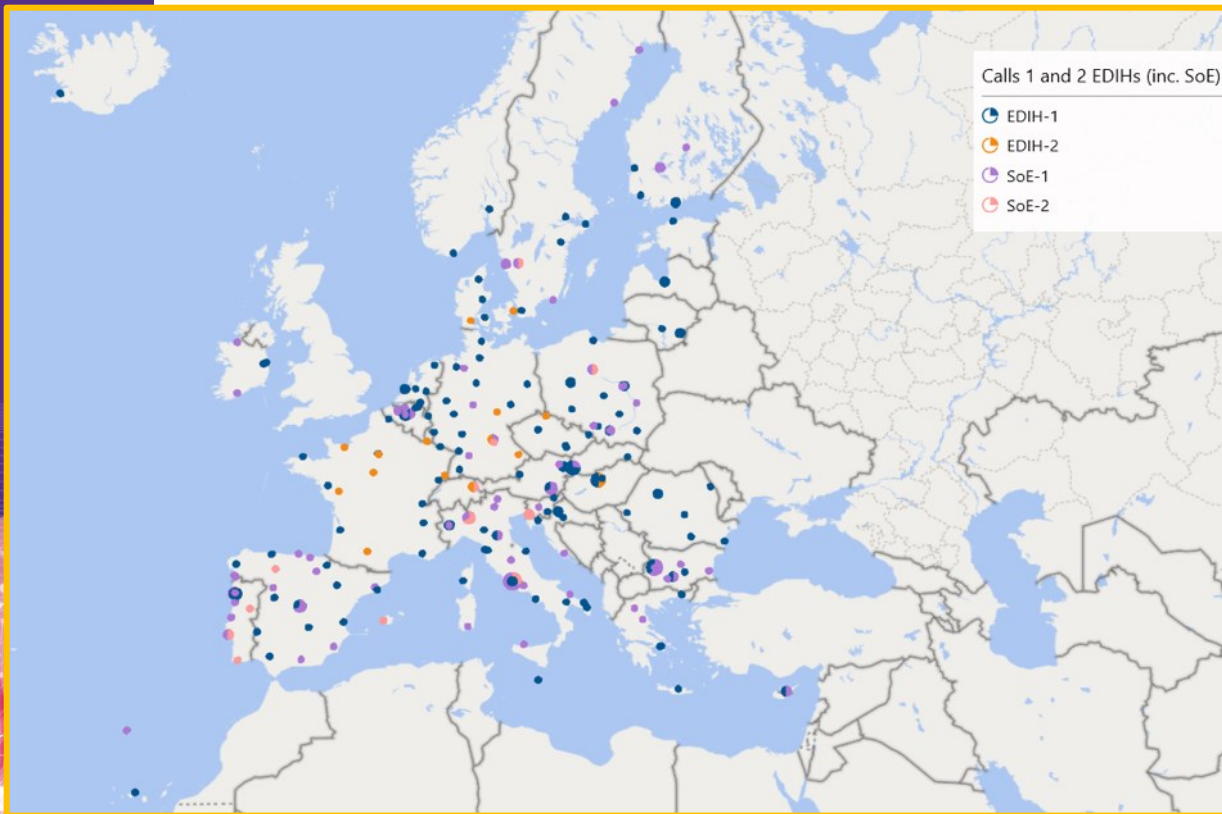
# Objectives of this meeting



- An easy get-to-know of TEFs and EDIHs: who – what - where
- By sectors or topic
- To reflect how an SME could perform a client journey and benefit from the respective strengths of TEFs and EDIHs



# European EDIH landscape



- 200+ EDIHs to meet the demand of SMEs and public organisations with digitalisation services
  - 151 EDIHs funded by DIGITAL
  - 40...60 Seal of Excellence EDIHs
  - Network established by Implementing Decision in July 2022
- EU27, Norway, Iceland, Liechtenstein
- Altogether, huge portfolio of technology competences and a coverage of most economic activity sectors
- Catalogue: <https://ec.europa.eu/edih>



# Sectorial AI Testing and Experimentation Facilities

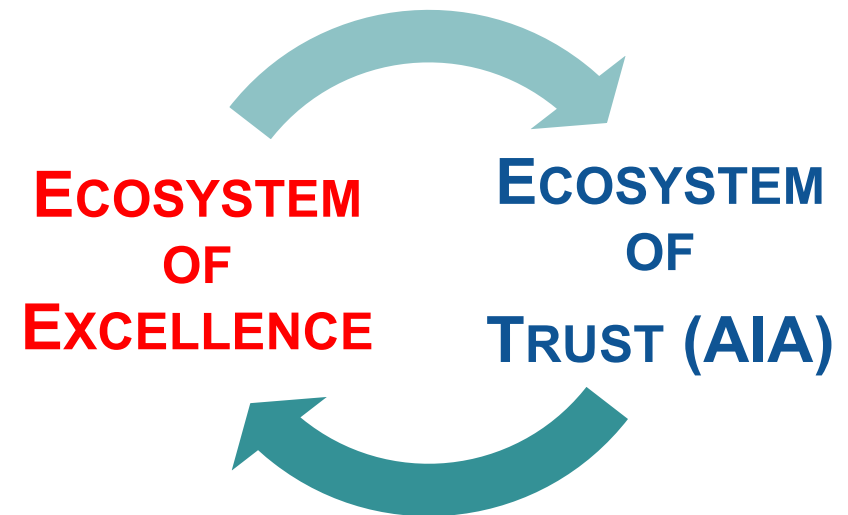
*Jan Hückmann*

*Policy Officer*

*A1, DG Connect - European Commission*

# OBJECTIVE

*Push S&T progress  
For AI / Robotics for Good and for ALL  
“Made in Europe”: Human centred & trustworthy*

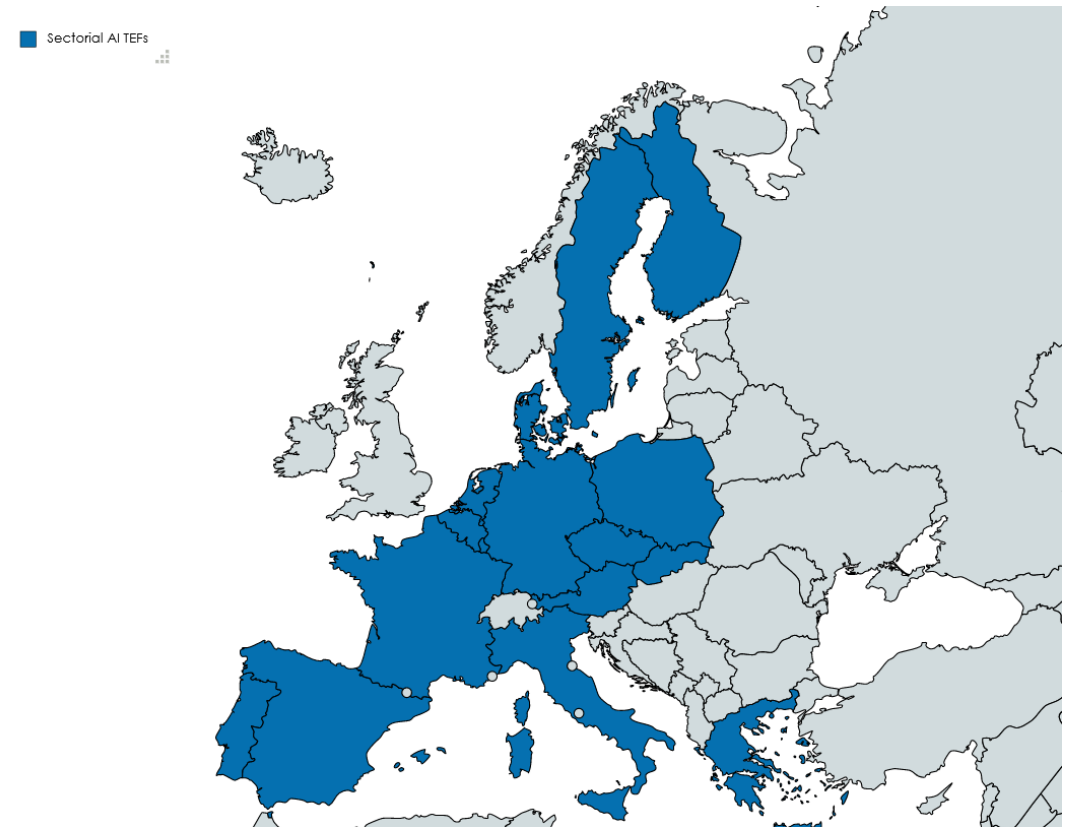


# Added value of sectorial AI TEFs

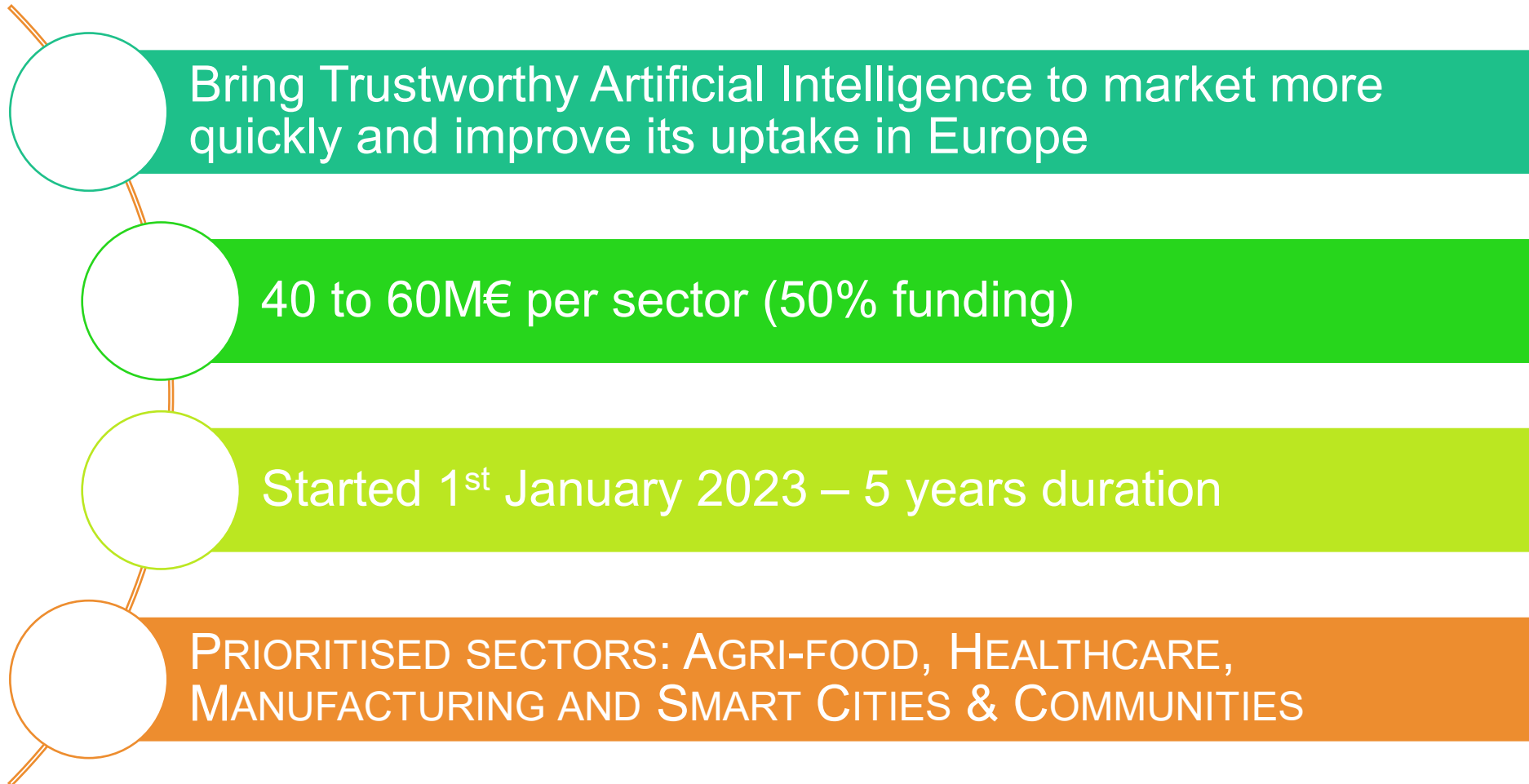
- Support the **deployment and uptake of trustworthy AI** and support the **implementation of the AI Act regulation**
- Support for **European technology providers** of AI solutions with validation/testing services
- Support TEFs as **world-class reference technology infrastructures** at EU level, boosting Europe's competitiveness

→ TEFs are joint efforts, aimed at creating critical mass, with a view of serving all European Innovators

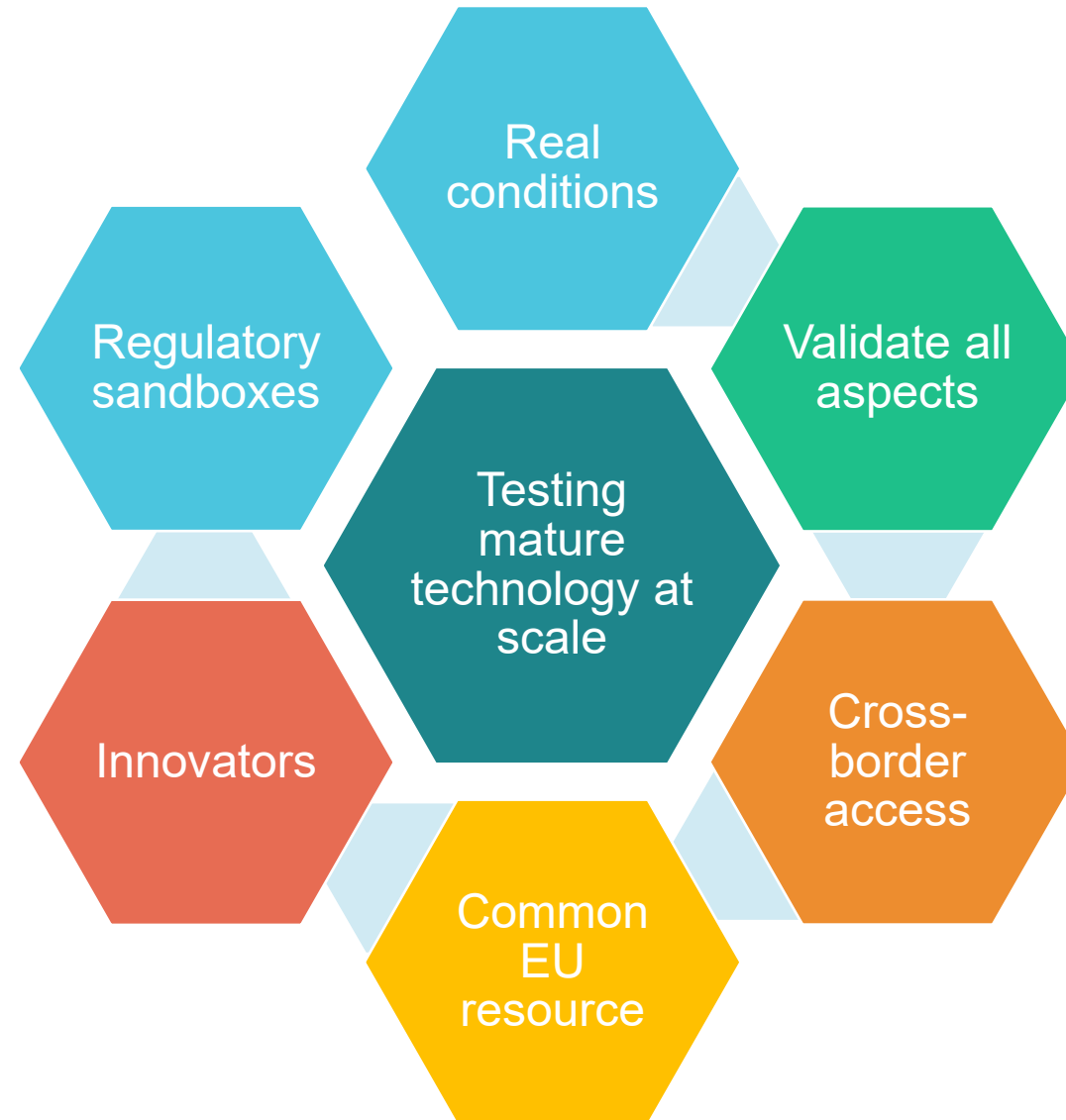
Member State coverage of sectorial TEFs



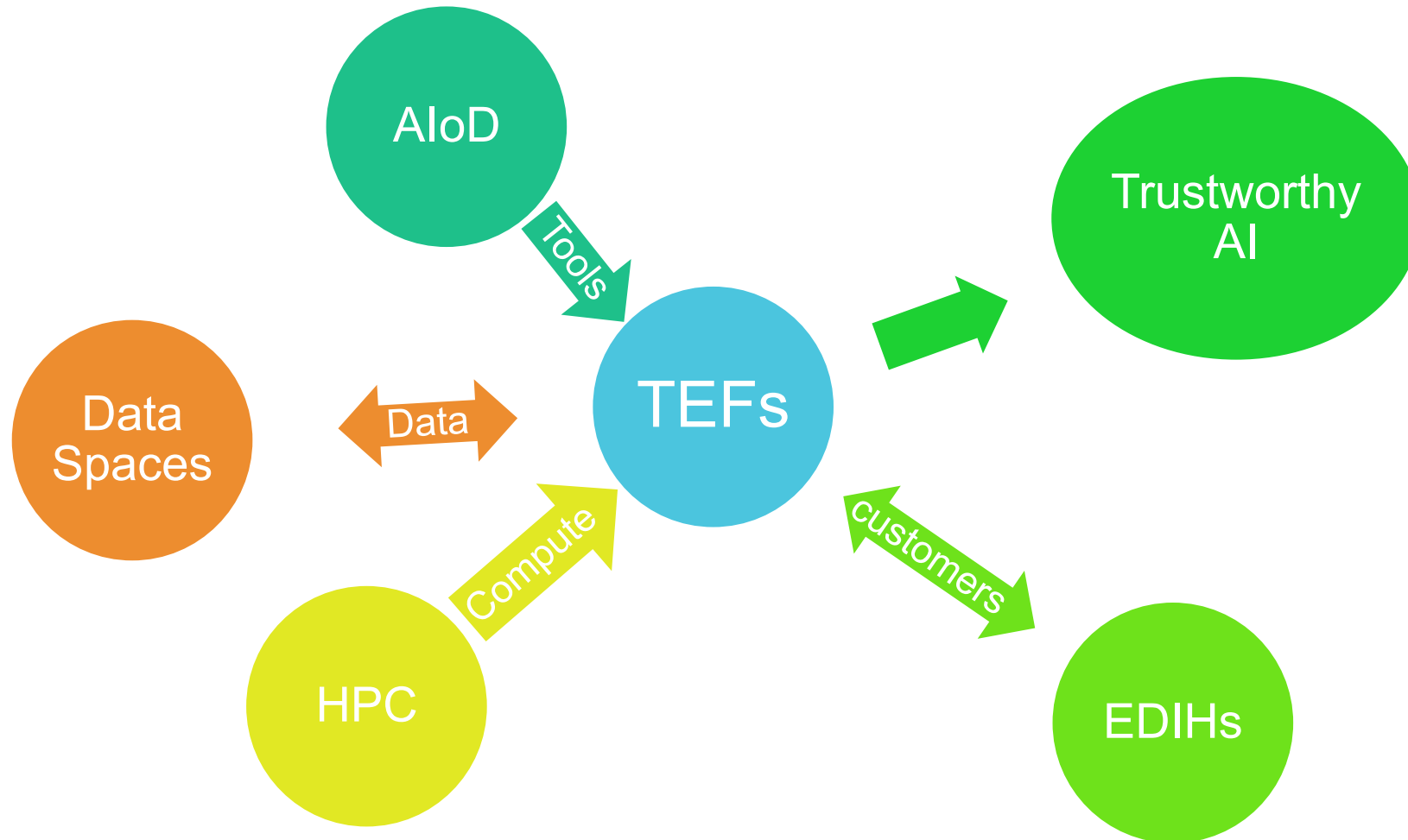
# Sectorial TEFs overview



# TEF Concept: EXPERIMENTATION AND TESTING TRUSTWORTHY AI



# TEFs & AI ecosystem: Maximising impact



# EDIH & AI-Robotics TEF collaboration

- Organise client journey between EDIHs and TEFs on the basis of their respective expertise and service offer
- EDIHs as access point to broader EU AI ecosystem
- Channel customers to right partners and required expertise & infrastructure
- AI regulations, and notably **AI Act**
  - TEFs support compliance & conformity for AI providers, and EDIHs help companies understanding digital regulations



# Next steps

- Closer collaboration between TEFs and EDIHs
  - through sectoral/topical specialisation as priority
- Focus on what makes a client journey and identifying synergies & complementarities on:
  - Customers
  - Service offers
  - AI Ecosystem, including AI Act

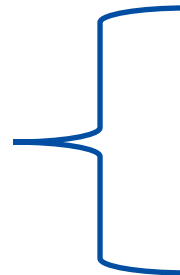
# AI Testing & Experimentation Facilities & EDIHs: Who is who in Manufacturing?

14:00

Welcome & Introduction

14:10

Manufacturing TEF & EDIH



- TEF *AI-Matters*, [David Servat](#), 10'
- Manufacturing EDIH (*EDIH SNL*), [Gerard Blom](#), 5'
- EDIH Thematic Working Group, *Data in Manufacturing*, [Alvaro Hernando](#), 2'



14:30

Agrifood TEF & EDIH



14:50

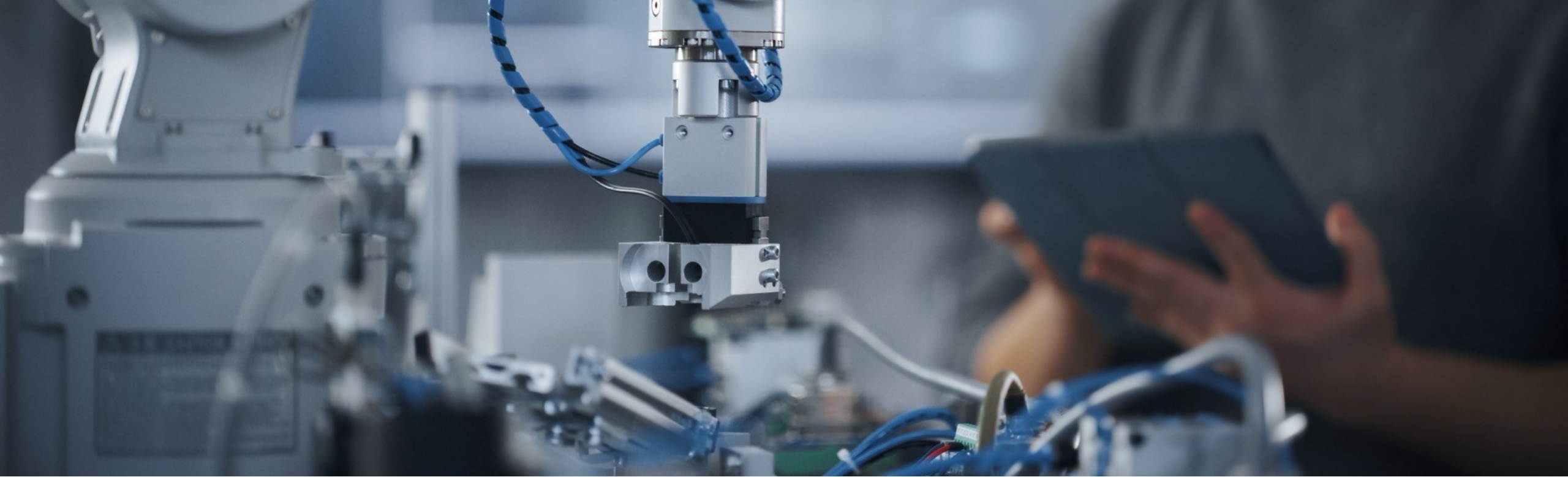
Smart-City TEF & EDIH



15:10

Health TEF & EDIH





# AI in MANufacturing TesTing and ExpeRimentation facilities for European SMEs

**AI-Matters - The Manufacturing TEF**


AI TEFs-EDIH online webinar, March 25<sup>th</sup> 2024

*David Servat*



Co-Funded by the European Union, under grant agreement number 101100707. Views and opinions expressed are however those of the author(s) only and do not necessarily reflect those of the European Union or the Directorate-General for Communications Networks, Content and Technology. Neither the European Union nor the granting authority can be held responsible for them.

# AI-Matters is a network of testing and experimentation infrastructures dedicated to the manufacturing sector

 7 Nodes

 1 Satellite



Network coordinator



- 4 Challenges
- 50+ Topic
- 140+ Services
- 8 locations
- 25 partners



# Challenges in manufacturing that AI-Matters addresses



## Human-Robot Interaction

Creating efficient, safe collaborations between workers and robots to increase productivity, reduce error rates and improved worker safety



## Factory level optimization

Leveraging advanced technologies and process improvements to streamline operations towards enhancing efficiency, minimizing waste, and boosting productivity



## Circular economy

Minimizing waste and making the most of resources, designing products for longevity, reuse, and recyclability, developing sustainable production processes



## Other upcoming and enabling technologies

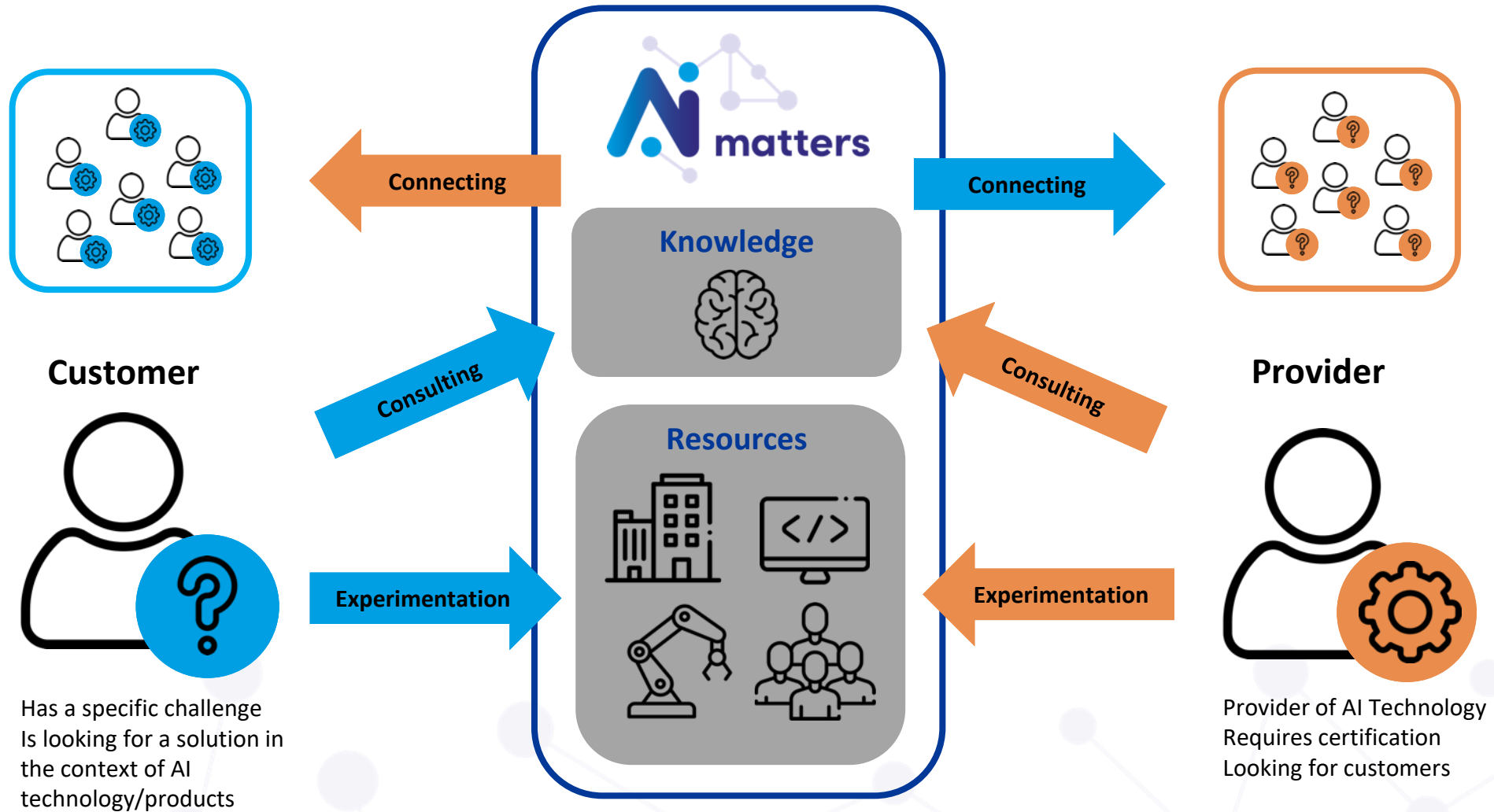
Integrating innovative tools and systems that support and enhance manufacturing processes and facilitate smarter production, supply chain efficiency and product innovation

**As an outcome TEFs provide annotated and qualified data for R&I on Generative AI**





# The AI-Matters offer





# Robotic Intra-logistics Testing

The service offers experiments and tests with robots of different types in complex industrial environments equipped with precise optical localization systems. It also offers support for AI implementation and development of AI-based systems for perception and control in mobile robots including advanced human-machine interfaces.

Testing customer's solutions in complex industrial environment in connection to many technologies in customer-defined scenarios

Human-robot interaction

Czech Node





# Setting Up Test-Bed For Automatic Disassembly Task

A highly integrated and compact system combining a single arm and exchangeable tools with 3D vision sensors, is proposed for disassembling operations. Enhanced with intuitive programming and advanced perception capabilities, it ensures an easy deployment to different use cases.

Helping customers evaluate intelligent robotic systems for performing complex disassembly tasks

Circular Economy

French Node







Tracking AGVs as they displace items from the warehouse to the workflow

Factory-Level Optimisation

Italian Node

## Asset Tracking Experimentation

Support in asset tracking through the use of selected technologies (GPS, WIFI, BLE, UWB) based on the company's transportation and logistics requirements.

The service includes an analysis/assessment phase and adoption of the selected technologies for a limited period in order to test and experiment the technical and functional requirement of technology adopted.





Testing grippers and manipulation strategies,  
before investing time in automation

Human-robot interaction

Dutch Node

## Dual cobot manipulation

Experiment whether one or two cobots can be used to automate a task in the production line. A single arm could be utilized for product singulation, e.g. in a bin- or heap picking task. The dual arm setup extends the ability towards tasks where humans normally need both their hands. Examples could be (dis)assembly tasks, packaging or introducing products to the production line.





Agile Robotic Cell  
Manufacturer



**First contract currently being validated**  
**Service : using digital tools for prototyping**  
**new product in additive manufacturing**

# Example of customer : VLM Robotics

Participation to the All TEF open  
for business in Berlin (March 4<sup>th</sup>)



## Area of Interest with TEF services

- Make POC for potential client
- Test development on a new control function
- Test how AI can enhance control function
- Identify by AI inter-dependance of parameters



# Synergies with industrial clusters and other initiatives

EDIH Paris  
Saclay



The Paris Region Hub  
accompanying digital  
transformation of companies  
**by practical adoption  
of responsible AI**

Examples of stakeholders at  
EU/national/regional level



Industrial clusters

Large companies -prime  
contractors  
Affiliated clubs



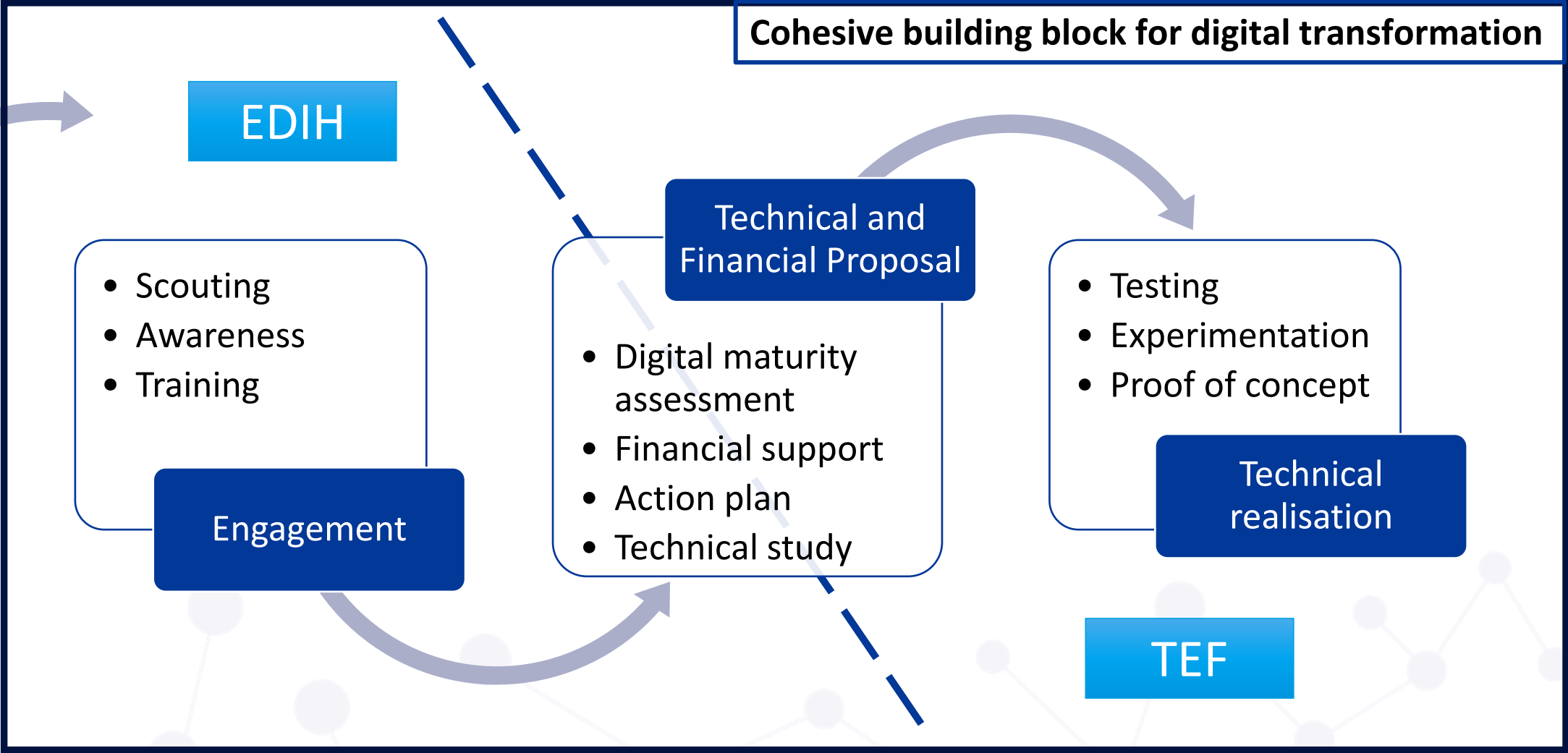
FactoryLab



**Promoting the AI-Matters service offer**, guiding SMEs toward the Manufacturing TEF,  
extending the industrial ecosystem with the help of federations and large companies  
As well as **getting the needed feedback on the relevance of our service catalogue** to guide its  
evolution



# Customer journey and articulation EDIH-TEF





# How to reach us

Through our website and contact form <https://ai-matters.eu/>

By direct emails to node partners and/or coordinator

What to expect?

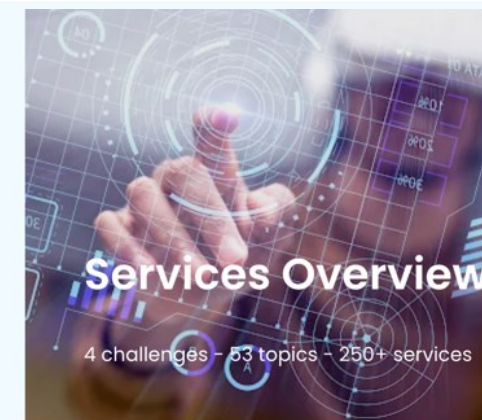
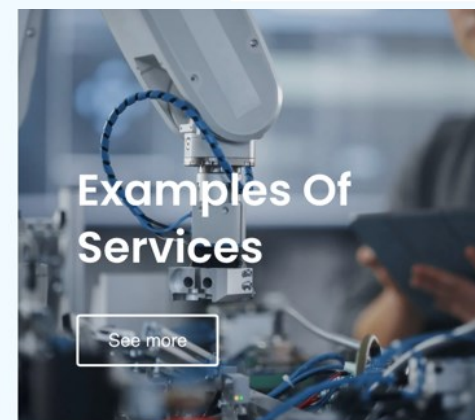
At this stage modalities of service delivery and contract are on a per case basis (some nodes think of relying on open calls, some don't)



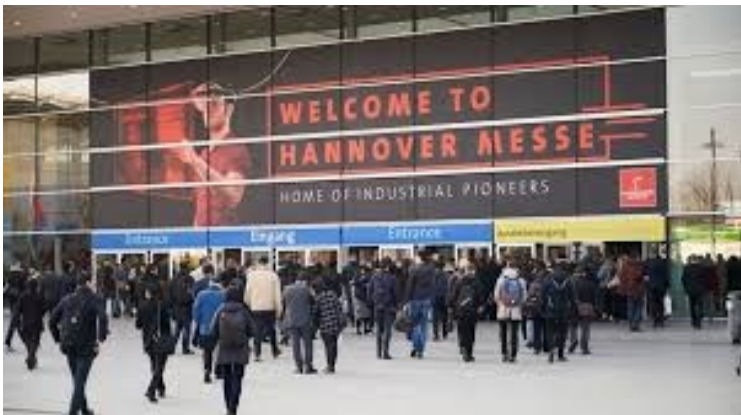
## Challenges & topics

4 Challenges and 50+ topics

1. Factory floor optimization
2. human-robot interaction
3. Circular Economy
4. Other emerging and enabling technologies



# Come and meet us! April in Hannover



*April 22 to 26 2024*

HANNOVER MESSE is the most important international platform and hot spot for industrial transformation - with excellent innovations or unusual products. Here you will find all the facts that make one thing even clearer: participation is an absolute "must"!

AI-MATTERS will be part of French delegation and will present its services during the Manufacturing-X and trilateral cooperation initiatives on 22<sup>nd</sup> and 23<sup>rd</sup> of April 2024.



Co-Funded by the European Union, under grant agreement number 101100707. Views and opinions expressed are however those of the author(s) only and do not necessarily reflect those of the European Union or the Directorate-General for Communications Networks, Content and Technology. Neither the European Union nor the granting authority can be held responsible for them.

# Come and meet us! June in Bilbao



**32 BIEMH**  
YOU MAKE IT BIG

3 - 7  
JUNE  
2024

In BIEMH knowledge, technology and opportunities that anticipate the future of industry are shared. It is Spain's leading international trade fair for **machine tools and advanced manufacturing** and the third most important fair in Europe.

AI-MATTERS organises its workshop on 6th June 2024 with specific panels for robotics and AI gathering experts and companies together.

You can already register at: [Visitor registration | BIEMH | BEC \(bilbaoexhibitioncentre.com\)](#)



Co-Funded by the European Union, under grant agreement number 101100707.





<https://ai-matters.eu/>



Co-Funded by the European Union, under grant agreement number 101100707. Views and opinions expressed are however those of the author(s) only and do not necessarily reflect those of the European Union or the Directorate-General for Communications Networks, Content and Technology. Neither the European Union nor the granting authority can be held responsible for them.



# EDIH-SNL

European Digital Innovation Hub South Netherlands

## Mission & goal of EDIH-SNL

- Contribute to digitalization and data sharing of the manufacturing and maintenance industry in supply chains of important sectors such as:
  - Agrifood
  - Process industry
  - Automotive
  - Semicon
  - Medical systems
- Long term goal (7 years):
  - >10.000 companies reached
  - >1.500 companies increased their digital maturity level
  - Impact measured via Digital Maturity Assessment



Our co-financiers  
and  
partners



**Gefinancierd door:**



Medegefinancierd door  
de Europese Unie



Ministerie van Economische Zaken  
en Klimaat

Provincie Noord-Brabant



provincie limburg



**Partners van EDIH Zuid zijn:**





# Our services



Groeiversnellers

**Klikopmorgen coach**



Groeiversnellers

**Expert support & coaching**



Groeiversnellers

**Workshops & round tables**



Groeiversnellers

**Assessments**



Groeiversnellers

**Peer-to-peer groups**



Groeiversnellers

**Use of fieldlabs**

## Results in 2023

Funnel stage	Activities & services	Number of SMEs involved 2023	Targets	
			2023	2024
Inform	Events	1505	1000	3000
	Communication			
Inspire	Workshops & round tables	151	100	300
	Intake interviews			
Initiate & Implement	Individual expert support	18	50	150
	Expert support to groups (peer-to-peer)	24		

## EDIH – TEF (Klikopmorgen – AI Matters)

Dimensions	Klikopmorgen.nl	AI Matters
Context	One of >200 in EU	One of 5 in EU
Sector	Manufacturing companies	
Company size	SMEs	SMEs & larger
Maturity degree of targeted companies	Beginners & slightly advanced	Rather advanced & frontrunners
Types of services	First & next steps	Specific & in deep issues
TRL area	8-9	6-7
Substantive scope	Digitalization (a.o. AI)	AI
Metaphorical comparison	“Swim instructor”	“Swimming pool”
Collaboration	Leads exchange & shared events (yet to start with)	



Thank you for your  
attention!





# Introducing the EDIH Thematic Working Group on Data for Manufacturing

EDIHs-TEFs getting to know each other

*Álvaro Hernando Hernando  
Project Officer*

# Data in Manufacturing Thematic Working Group

- **78 EDIHs+SoEs** take part in the Data in Manufacturing (DiM) TWG, this represents a **35% of the total network**.
- More than **130 individual participants** join our meetings.
- The group has held **6 meetings**, including one matchmaking event.
- The **content** relates to the use of data in the manufacturing environment, with practical use cases, best practices, useful insights on recent legislation... in a 'EDIHs talks to EDIHs' approach.

# AI Testing & Experimentation Facilities & EDIHs: Who is who in Agrifood?

14:00

Welcome & Introduction

14:10

Manufacturing TEF & EDIH



14:30

Agrifood TEF & EDIH



14:50


Smart-City TEF & EDIH



15:10

Health TEF & EDIH



- TEF *Agrifood*, Raffaele Giaffreda, 10' 
- Agrifood EDIH (*AgroHub.BG*), Ivan Draganov, 5'
- EDIH Thematic Working Group (*being set up*), Gaspard Demur, 2'



# AgrifoodTEF EDIH/TEF interactions

25 March 2024

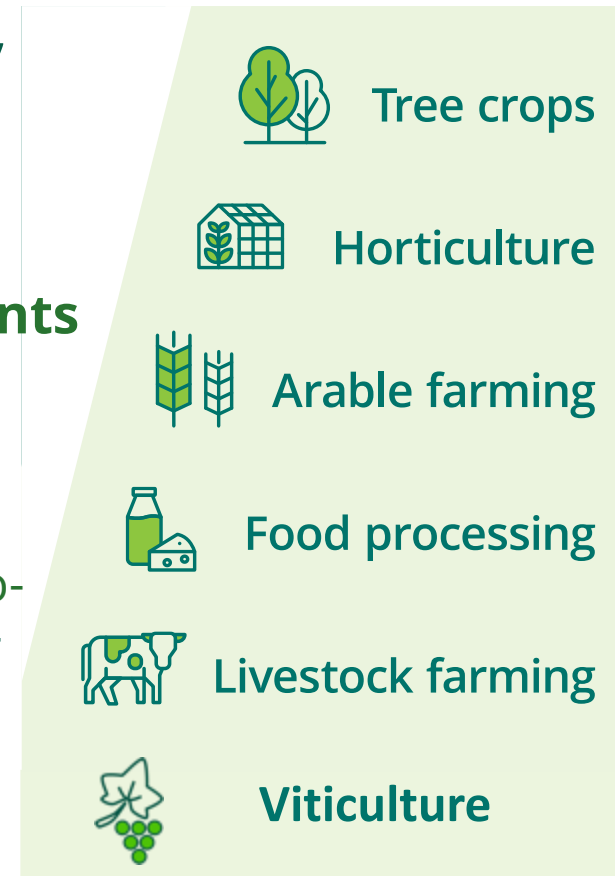
R. Giaffreda (FBK)

AgrifoodTEF Coordinator

# Main features (major focus/use-cases)



- Which agrifood sectors? **Primary production** (arable, woody, vegetables, grass farmland, etc.), as well as **livestock farming**
- Which technologies? (**AI**, agro-machinery and **robotics**, UAVs, remote sensing, IoT sensors, imagery and **data mgmt**, connectivity)
- Which Experimental Facilities? **Open fields and Controlled Environments**
- Which use-cases, where?
  - NODES: quality crops – **Italy**, agro-machinery – **Germany**, AI conformity assessment – **France**
  - SATELLITES: Agro Ecology in Controlled Environments – **The Netherlands**, Co-creation in agrifood production Flandres – **Belgium**, HPC tech for agrifood – **Poland**, AI for arable and farmland machinery – **Austria**, new frontiers for sustainable farming in the North – **Sweden**, Mediterranean cultures and livestock farming – **Spain**
- Impact Keywords: sustainability, affordability, traceability, usability



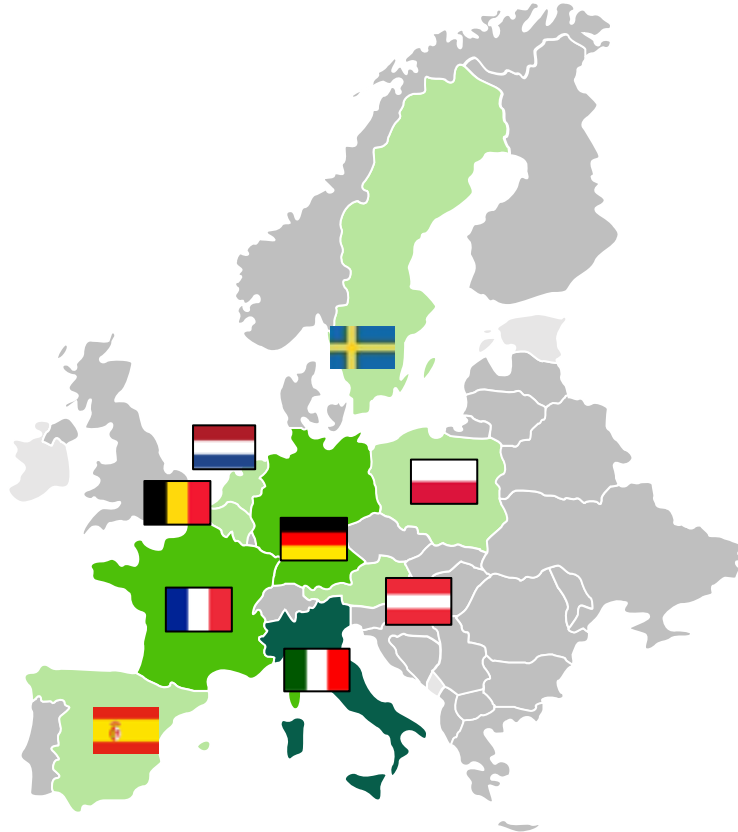


# The Management Team

Node and Satellite Leaders



## Satellite Leaders

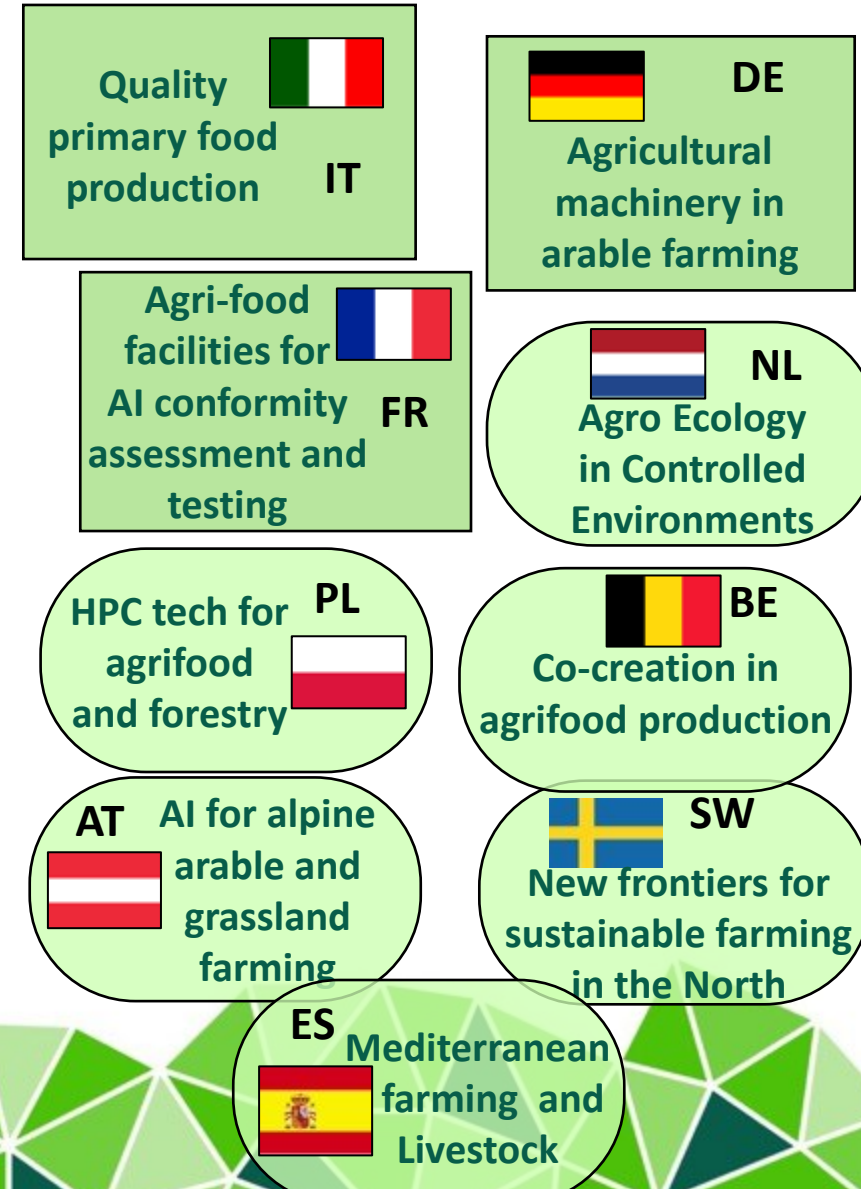
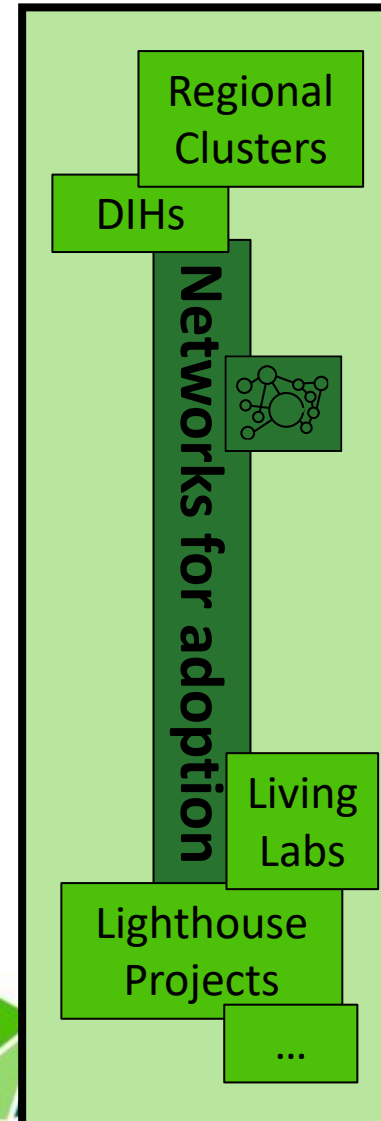
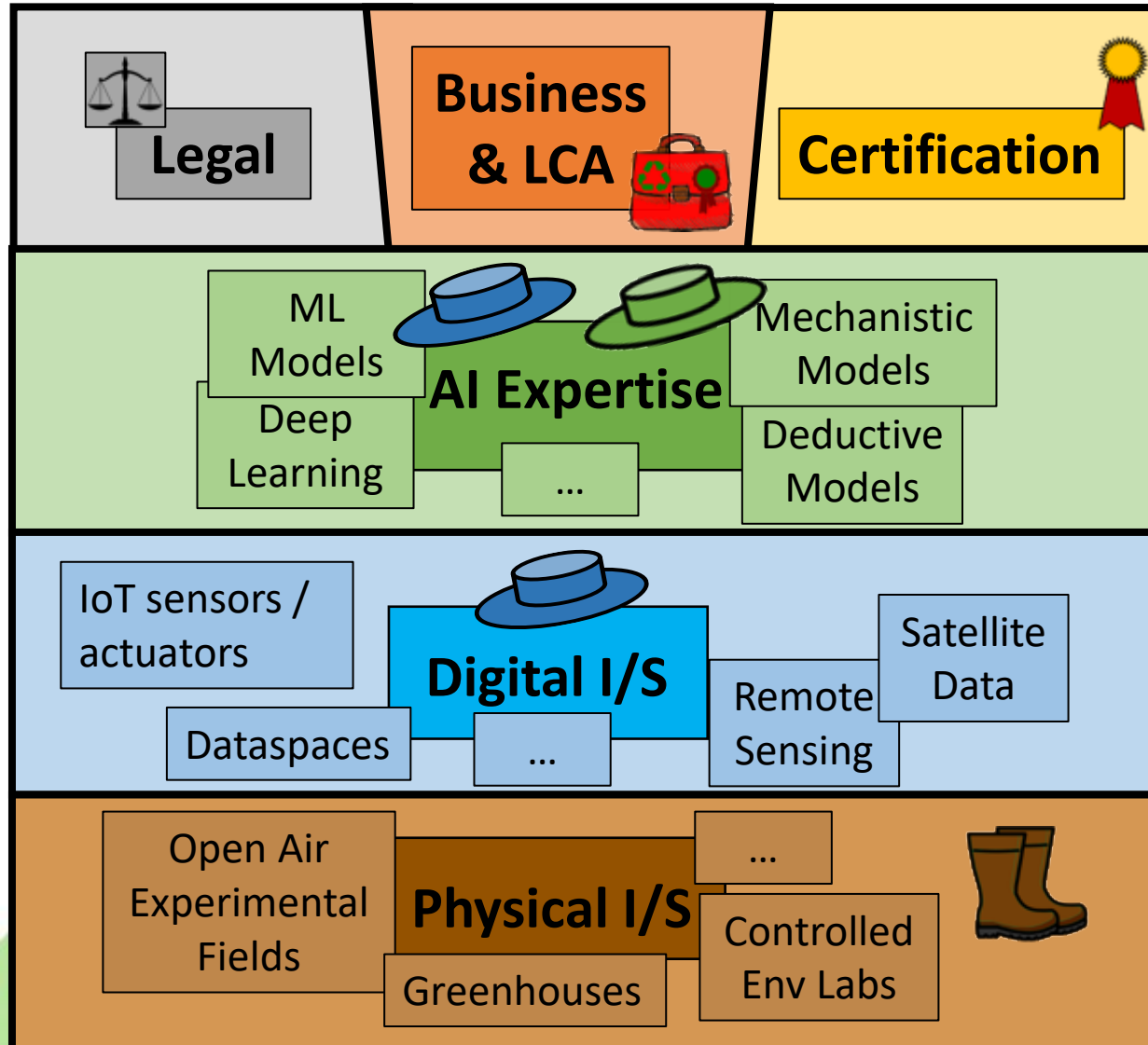




# Project Structure

*Common activities  
between nodes / satellites*

*Country specifics*



# AgrifoodTEF use cases

- Benchmarking and improvement of Robotics
- Assessment of AI for production control
- Use of field and validation data for impact



# Importance of AgrifoodTEF services

- **AUTONOMY** (less manpower)
- **PRECISION** (less chemical inputs)
- **SAFETY** (less accidents)

**ROBOTICS**



# Importance of AgrifoodTEF services

- **YIELD CONTROL** (produce more with less)
- **QUALITY** (cause-effect relationships)

**AI ASSESSMENT**





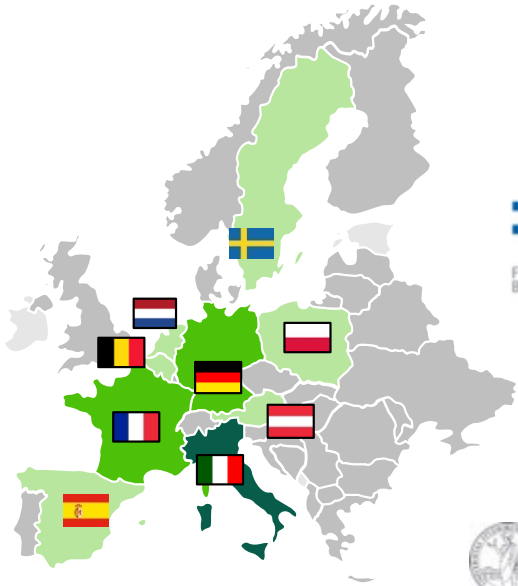
# Importance of AgrifoodTEF services

- **IMPACT FROM DATA (agronomic value)**
- **ACCELERATE PATH TO MARKET (business value)**
- **CONTRIBUTE TO DATA ECONOMY (social value)**

**DATA MATTERS**



# Partners



[agrifoodtef.eu](http://agrifoodtef.eu)



This project has received co-funding from the European Union's Digital Europe Programme under grant agreement N° 101100622.



# Thank you



# agrifoodtef.eu



This project has received co-funding from the European Union's Digital Europe Programme under grant agreement N° 101100622.





Co-funded by the  
European Union

# Bringing innovative technologies for precision farming to the agri-food sector

March 2024





# AgroHub.BG is the European Digital Innovation Hub for agriculture in the South Central Region of Bulgaria

Project: AgroDigiRise  
Number: 101083473  
Program: DIGITAL-2021-EDIH-01  
Duration: 36 months



Co-funded by the  
European Union

Our **mission** is to unlock the innovative potential of the **South Central Region of Bulgaria** in the agricultural sector.

The main **goal** of the project is to develop the potential of the agricultural sector.

The **focus** of the project is **precision farming** - automation of processes, optimization of resources, and intelligent agronomy.



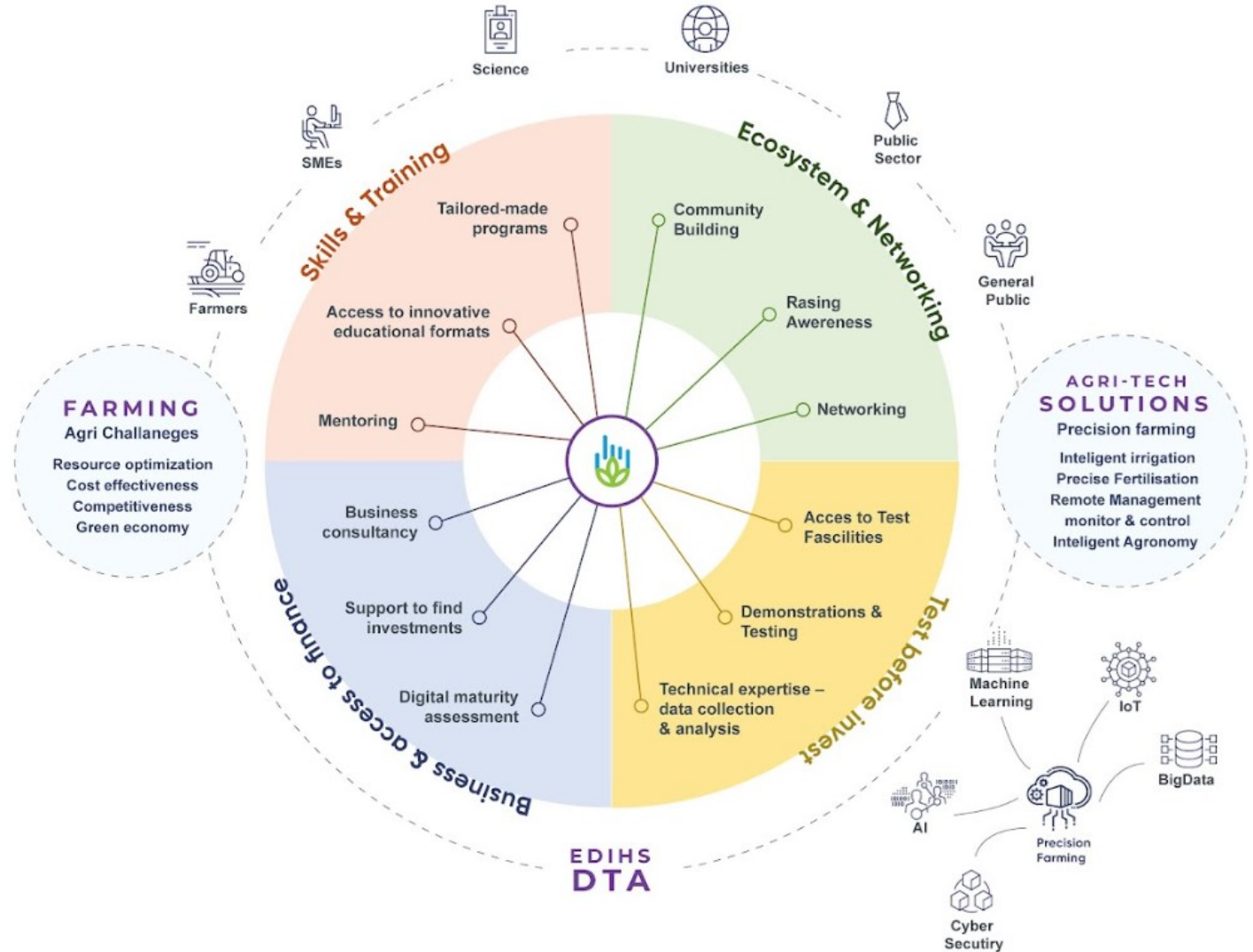
The project is implemented by a consortium with diverse profiles and experiences, which share a common vision of a more modern, resilient, and digital agri-food sector

Our consortium consists of 14 organisations

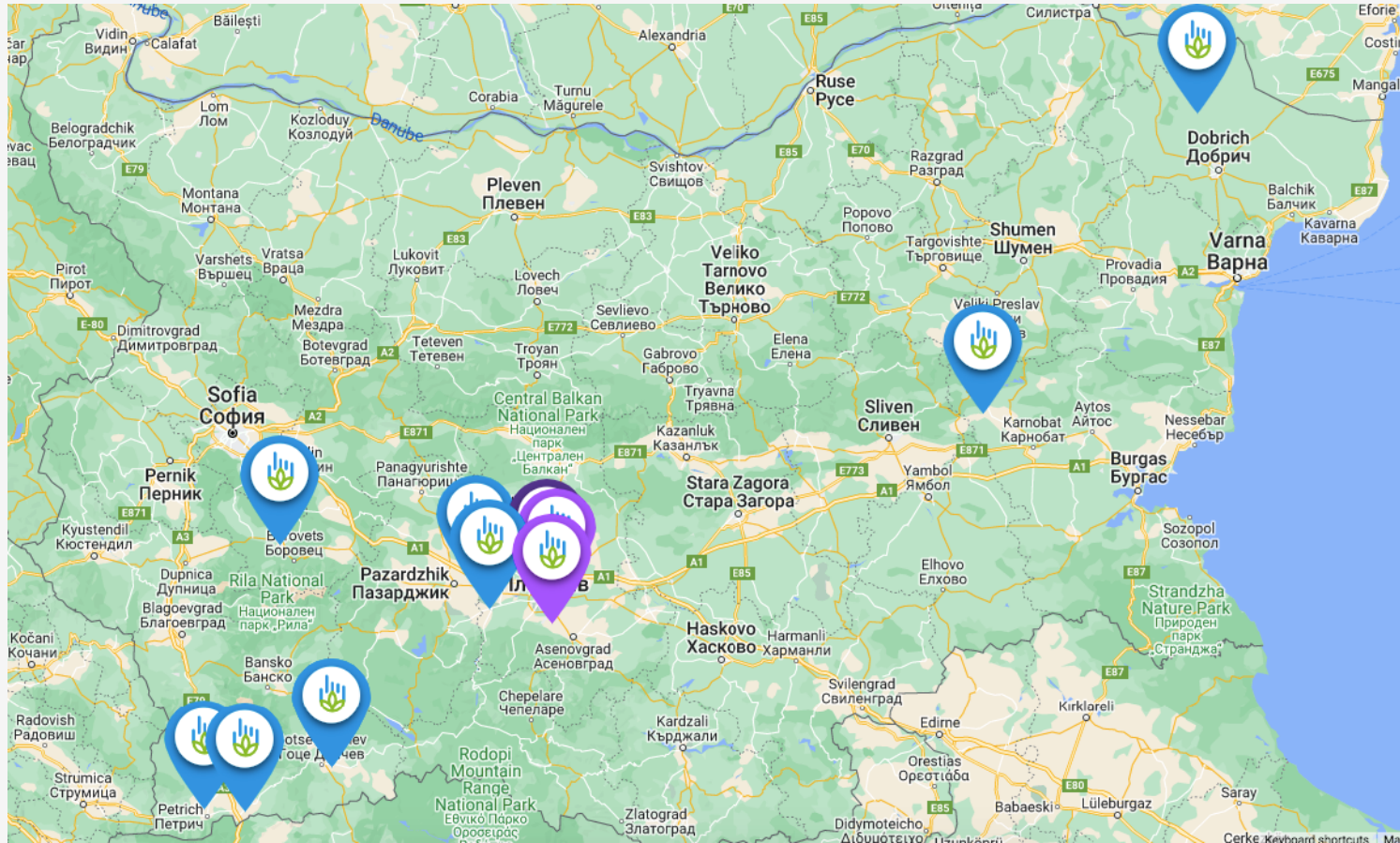


To solve Bulgaria's agri challenges, we've developed complex agri-tech solutions directed towards farmers, SMEs, and all participants in the agri-food chain, as well as in the public sector

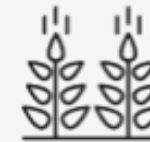
Services offered by AgroHub.BG by category



# AgroHub.BG is building a tech-enabled infrastructure across Bulgaria for the “Test before invest” services



**Greenhouses**



**Open fields**



**Vineyards**



# In the Demo points we showcase a complex technological solution according to the Bulgarian specifics of the sector



Precision farming solution for greenhouses, vineyards and open fields - automation system for precise irrigation, precise fertigation and climate control



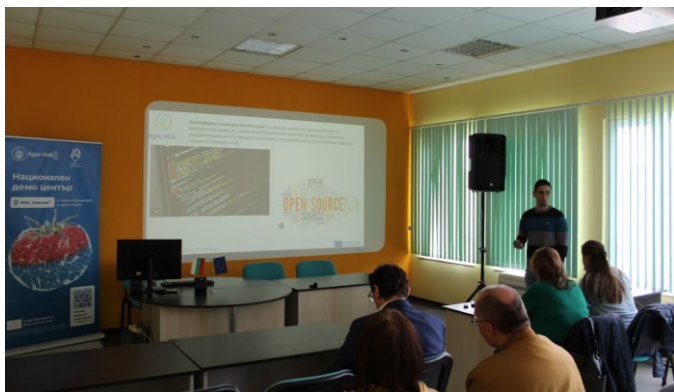
Disease prediction model and smart farm management with a focus on vineyards, but expanding the product range



Satellite imagery for precision agriculture and remote monitoring and control

Pix2Logica is an innovation web-based app without an analog in Bulgarian

# Skills & Trainings



Agri Tech Glossary - an explanatory module for basic agri tech terms for media representatives



"Precision farming from the inside" - a workshop for intelligent irrigation, precise fertilization and climate control



Support for investment in innovative technologies - forum and discussion



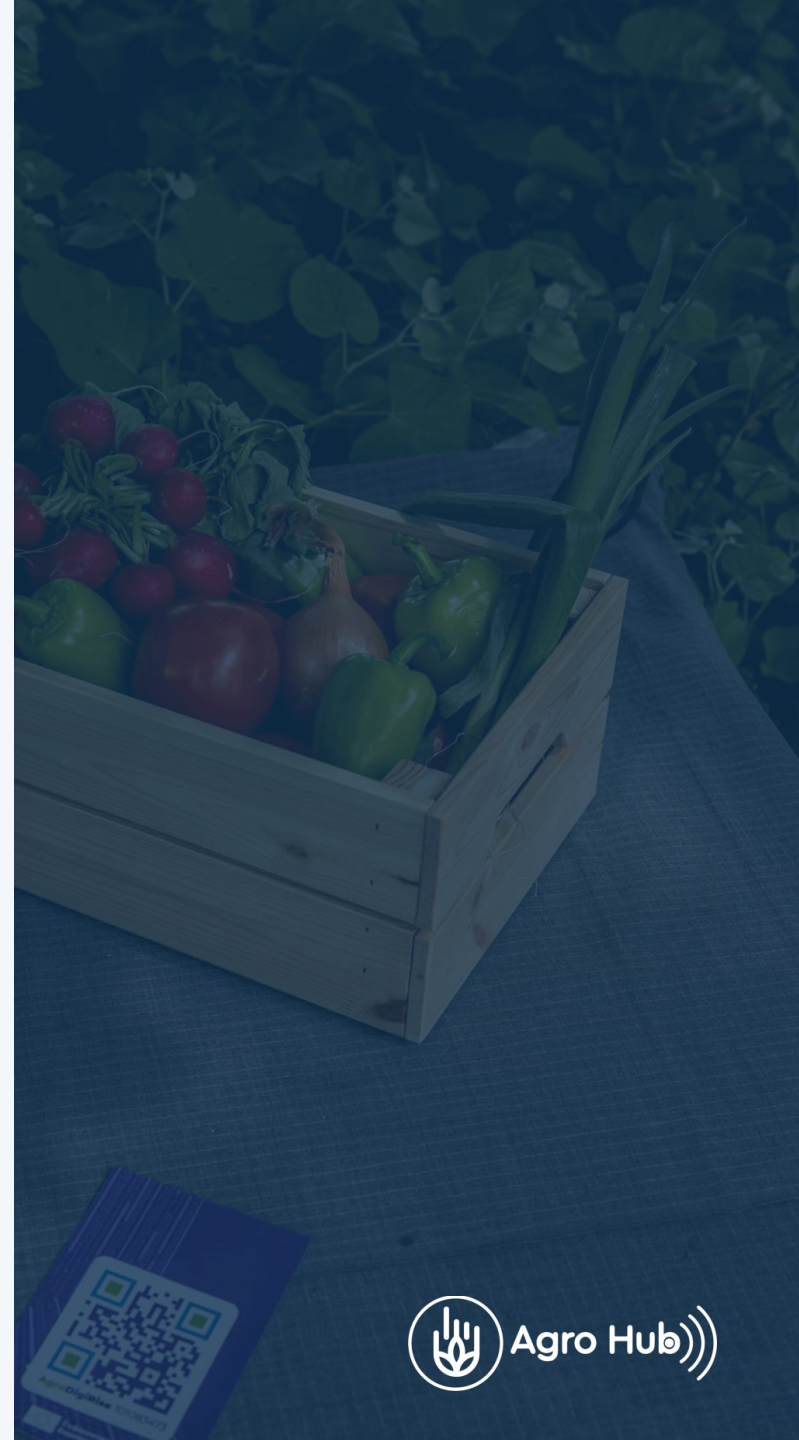
How to smarter fertilize tomato plants? - a workshop for precise fertilization of tomatoes

## Upcoming:

- Fertilization at the right time in the right place with the right composition and ratio of nutrients.
- Distribution, biology and transmission of tomato brown streak virus.
- Good practices and innovative technologies in growing the vines.
- Innovative technologies in growing the vines based on the collected meteorological data and phenological conditions.

# Business consultancy & access to finance

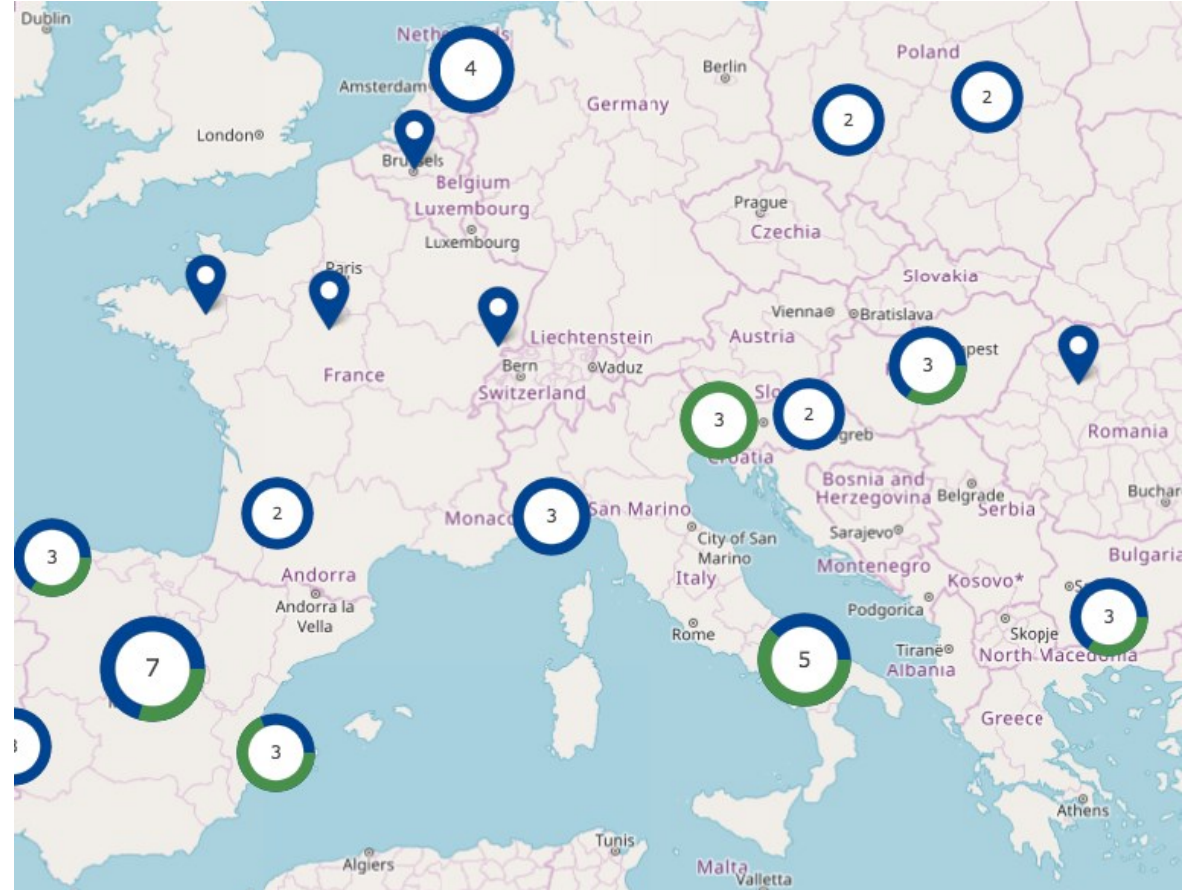
- Precision agriculture consulting
- Technological adoption and integration
- Agronomic advisory services
- Winery solutions
- Business and financial planning
- Project proposal and grant application assistance
- Cybersecurity for agriculture





# AgroHub.BG is constantly seeking synergies with innovators from the EDIHs and TEFs network by:

- Transferring good experience in the field of precision farming, offering know-how and concrete solutions that can benefit EDIHs and TEFs with a similar profile
- Facilitating the exchange of offers/request of cooperation profiles to give clients (farmers, SMEs and public sector) more opportunities to find the right digital technology
- Consulting the local companies and stakeholders to get support from other EDIHs and TEFs
- Organizing joint events and study visits to facilitate cooperation on new digital technologies and their application in the agricultural sector



## Reach out to us for collaboration



[www.edih.agrohub.bg](http://www.edih.agrohub.bg)



[info@agrohub.bg](mailto:info@agrohub.bg)  
[marketing@agrohub.bg](mailto:marketing@agrohub.bg)



[agrodigirise](https://www.linkedin.com/company/agrodigirise)



[agrohub bg](https://www.facebook.com/agrohub.bg)



Co-funded by the  
European Union



# AI Testing & Experimentation Facilities & EDIHs: Who is who in Agrifood?

14:00

Welcome & Introduction

14:10

Manufacturing TEF & EDIH



14:30

**Agrifood TEF & EDIH**



14:50


Smart-City TEF & EDIH



15:10

Health TEF & EDIH



- TEF *Agrifood*, Raffaele Giaffreda, 10' 
- Agrifood EDIH (*AgroHub.BG*), Ivan Draganov, 5'
- EDIH Thematic Working Group (*being set up*), Gaspard Demur, 2'



# AI Testing & Experimentation Facilities & EDIHs: Who is who in Smart City & Sustainable Environment?

14:00

Welcome & Introduction

14:10

Manufacturing TEF & EDIH



14:30

Agrifood TEF & EDIH



14:50

Smart-City TEF & EDIH



15:10

Health TEF & EDIH



- TEF *CitCom AI*, [Martin Brynskov](#), 10'

CitCom<sup>™</sup>

(please have a look at 38:11 on [European Digital Innovation Hubs \(EDIH's\) and Testing & Experimentation Facilities \(TEFs\) in the Digital Europe Programme on Vimeo](#))

- EDIH & Sustainable Thematic Working Group, [Ludwig Locht](#), 8'



# Thematic working group on sustainability

**74 persons from 50 EDIHs**

Ludwig De Locht



## Three main topics identified



Sustainable digital  
technology



Digital technology for  
sustainability



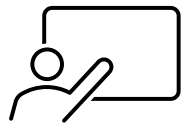
Assessing sustainable impact of  
digital solutions



**Matchmaking for joint projects**



**Knowledge sharing assessment tools**

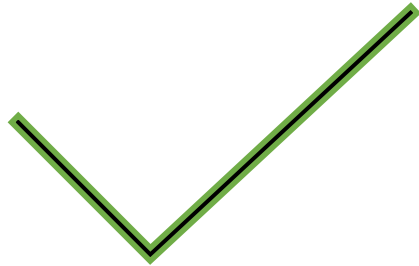


**Catalogue of trainings/demonstrators on digital and sustainability**

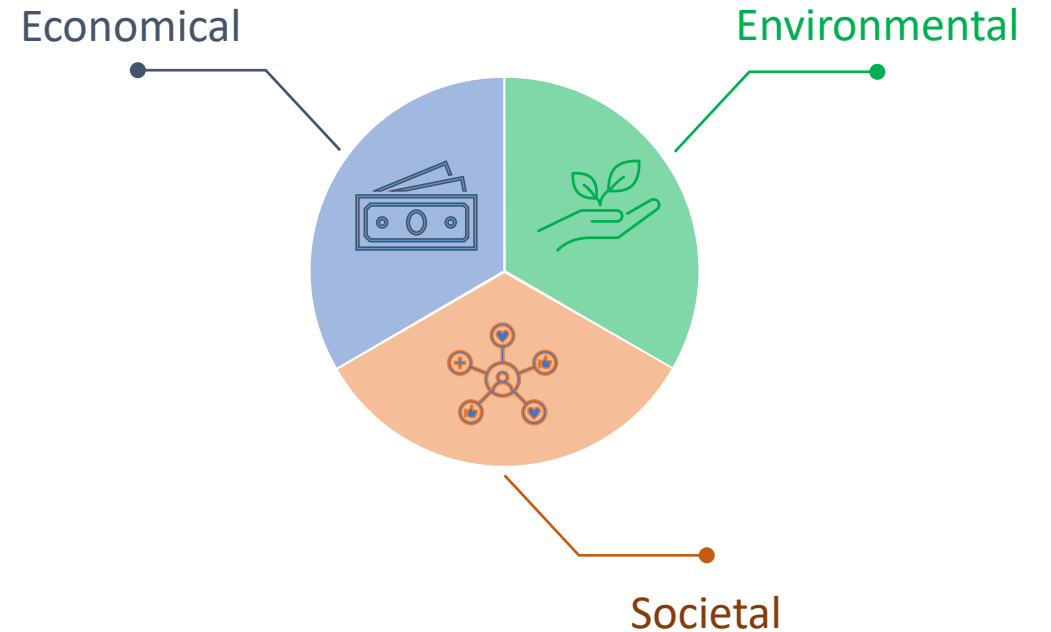


# Assessment frames as crucial discussion advisors

Can we build it?



Should we build it?





## EDIHs validate frameworks and methodologies for practical application

- Daily contacts with SMEs and PSOs
- Experience the unfolding innovation in the regions
- The point of access to digital innovation

sustAI  
.brussels

SUS



# LET'S GET IN TOUCH!

Are you interested?

Ludwig De Locht

[Ludwig.Delocht@sirris.be](mailto:Ludwig.Delocht@sirris.be), +32 474 96 44 89

# AI Testing & Experimentation Facilities & EDIHs: Who is who in Smart City & Sustainable Environment?

14:00

Welcome & Introduction

14:10

Manufacturing TEF & EDIH



14:30

Agrifood TEF & EDIH



14:50

Smart-City TEF & EDIH



15:10

Health TEF & EDIH



- TEF *Health*, Petra Ritter, 10'
- EDIH & Health Thematic Sebastian Meijer, 8'



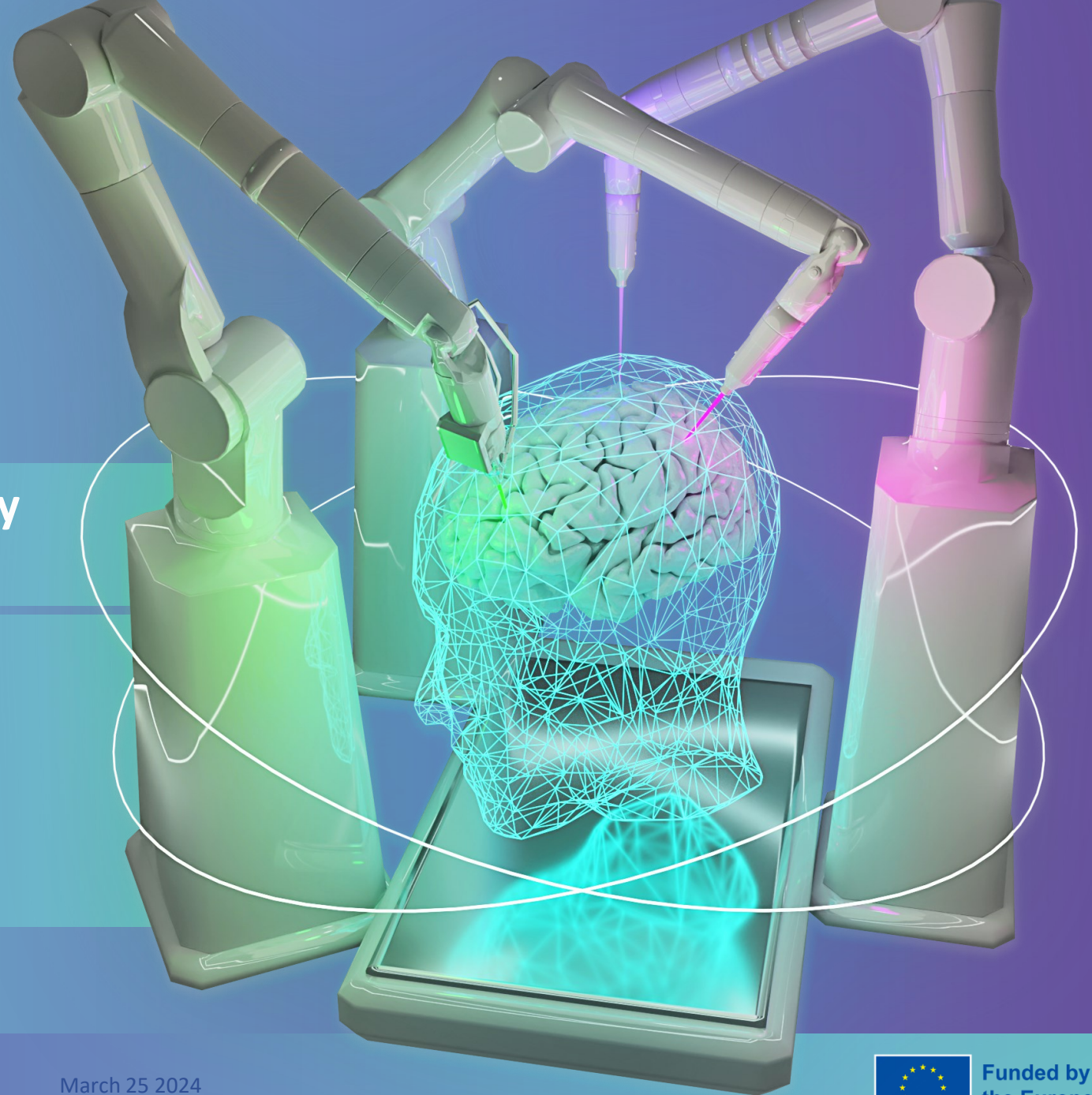
Working Group,



# Testing and Experimentation Facility for Health AI and Robotics

Professor Dr. Petra Ritter  
Charité Universitätsmedizin Berlin  
Berlin Institute of Health

TEF-Health Lead and Coordinator





**Trustworthy AI - Made in Europe**





## Products

Find the artificial intelligence based software for radiology that you are looking for.  
All products listed are available for the European market (CE marked).

Subspecialty: Modality: CE: <sup>i</sup> CE class: <sup>i</sup> FDA class: <sup>i</sup> Sort by:

All ▾ All ▾ MDR ▾ All ▾ All ▾ last modified ▾

Search... Search

60/220 results



Subspecialty: Modality: CE: <sup>i</sup> CE class: <sup>i</sup> FDA class: <sup>i</sup> Sort by:

All ▾ All ▾ MDR ▾ Class III ▾ All ▾ last modified ▾

Search... Search

0/220 results

Subspecialty: Modality: CE: <sup>i</sup> CE class: <sup>i</sup> FDA class: <sup>i</sup> Sort by:

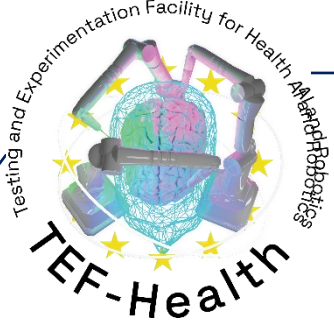
All ▾ All ▾ MDR ▾ Class IIb ▾ All ▾ last modified ▾

Search... Search

21/220 results



<https://grand-challenge.org/aiforradiology/>



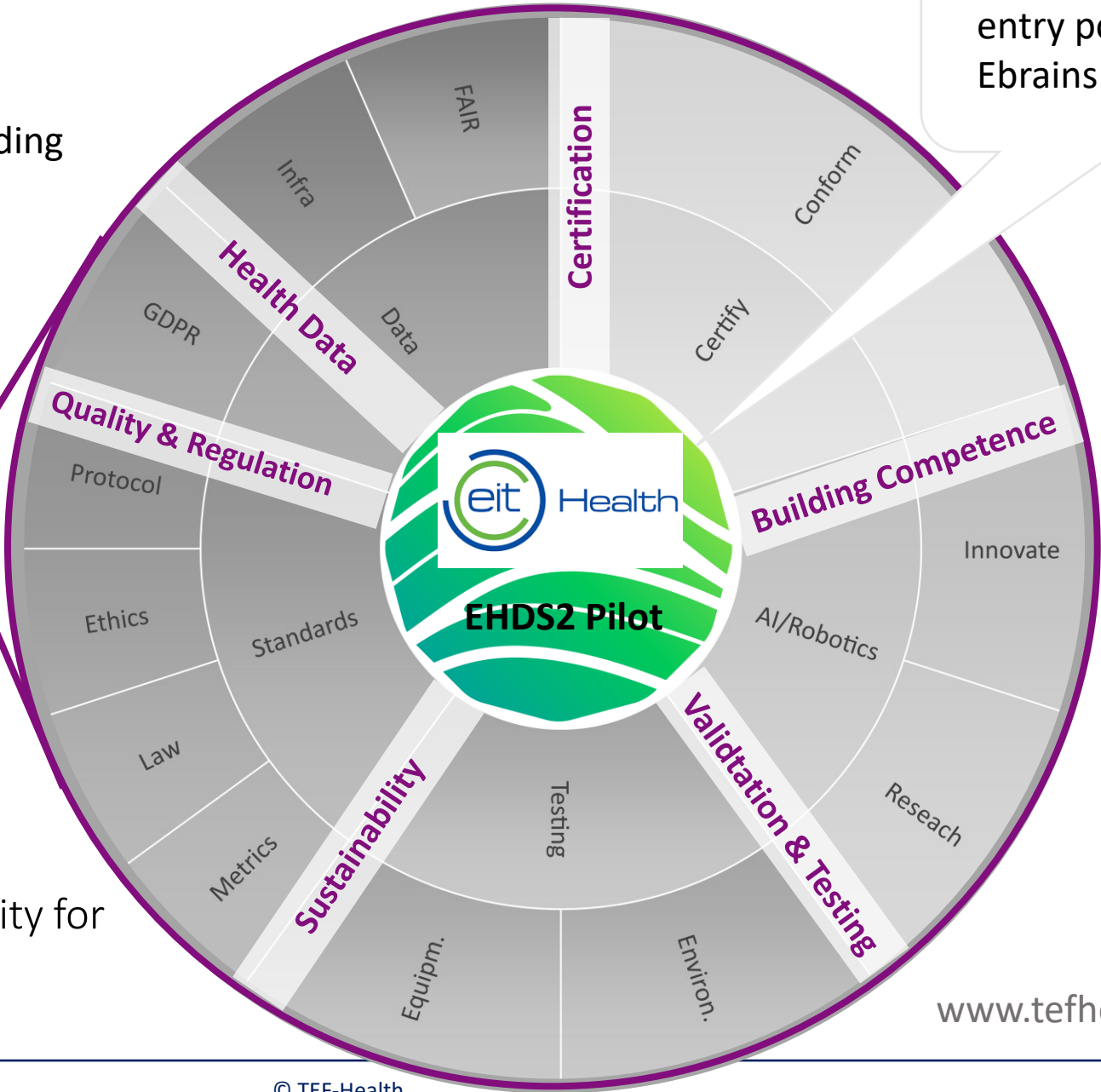
52 partners  
9 Countries  
€60 Mill funding

Single EU-wide entry point through Ebrains.eu (ESFRI RI)

- Idea
- Research
- Data, Knowledge

- Data driven innovation and validation
- Testing
- Certification

- Marketable product

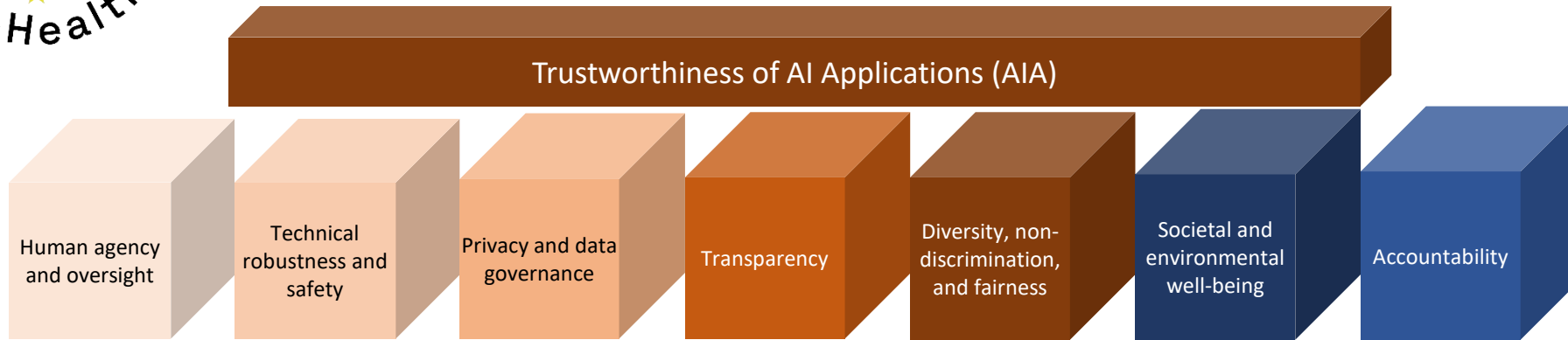


- Service Categories:
- Data
  - Standards
  - Testing
  - AI/Robotics
  - Certify

EU Testing and Experimentation Facility for Health AI and Robotic (TEF-Health):  
EU-wide one-stop shop

[www.tefhealth.eu](http://www.tefhealth.eu)

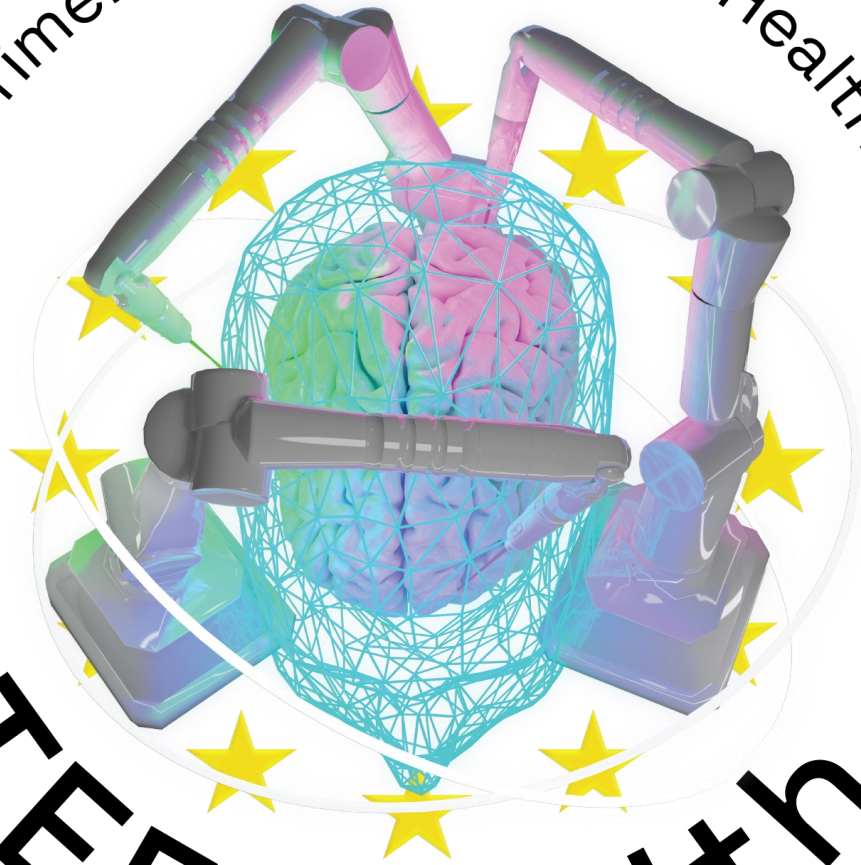
# Developing products with “Trustworthiness by design and by default”



1. Plan evaluation: AI model evaluation plan
  - Selection and justification of quality metrics
2. Conduct Testing: Test protocols
  - Functional and non-functional characteristics
  - Different test data including external data
3. Report AI Model evaluation: AI model evaluation report
  - Technical evaluation during the entire life cycle



Testing and Experimentation Facility for Health AI and Robotics



UAF - Health

# To make the EU the place where AI excellence thrives from the lab to the market:

World-class Testing and Experimentation Facilities (TEFs) for AI.

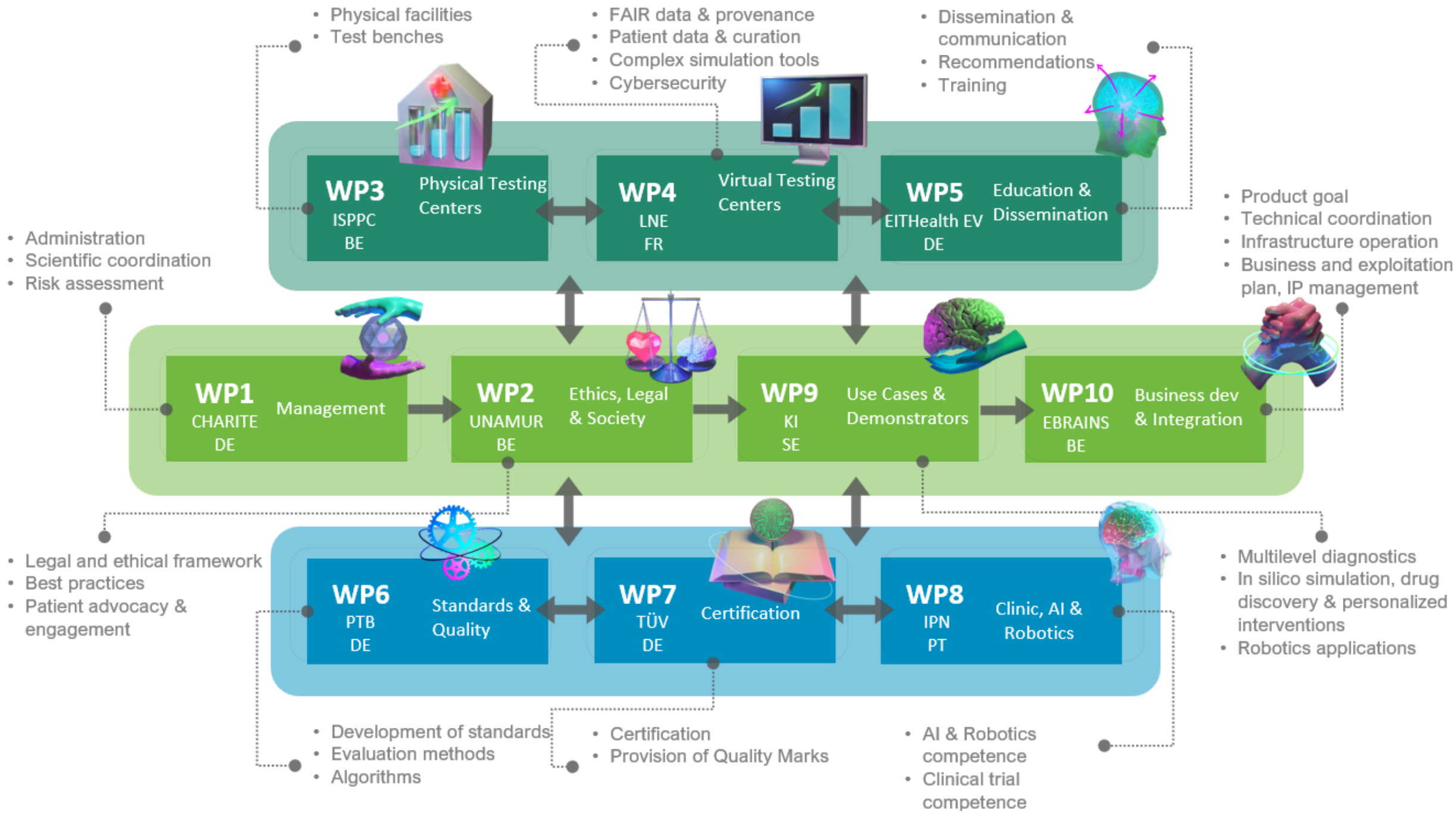
Physical Testing

Virtual Testing

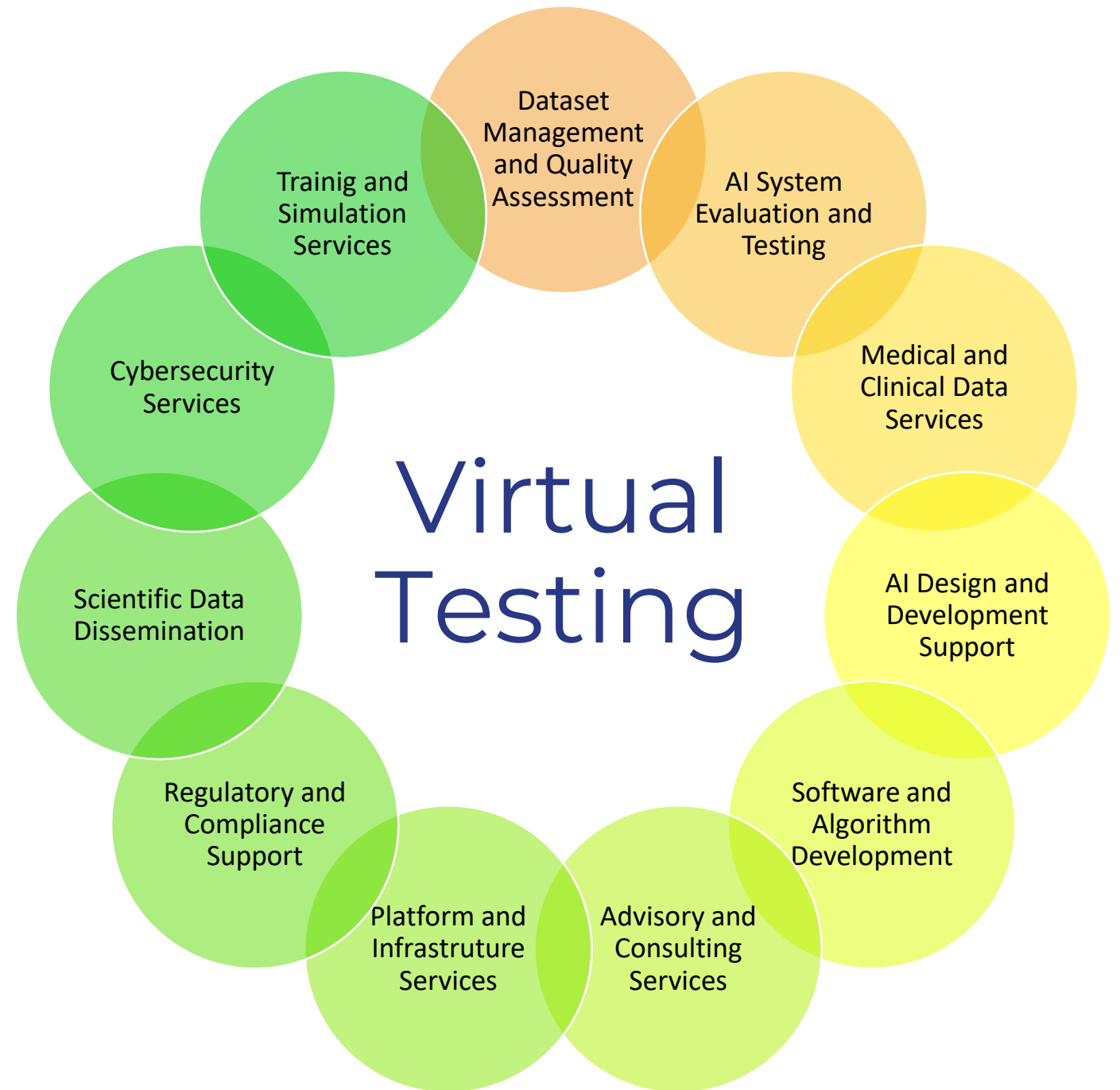
Clinical trial and consulting



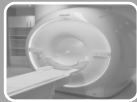





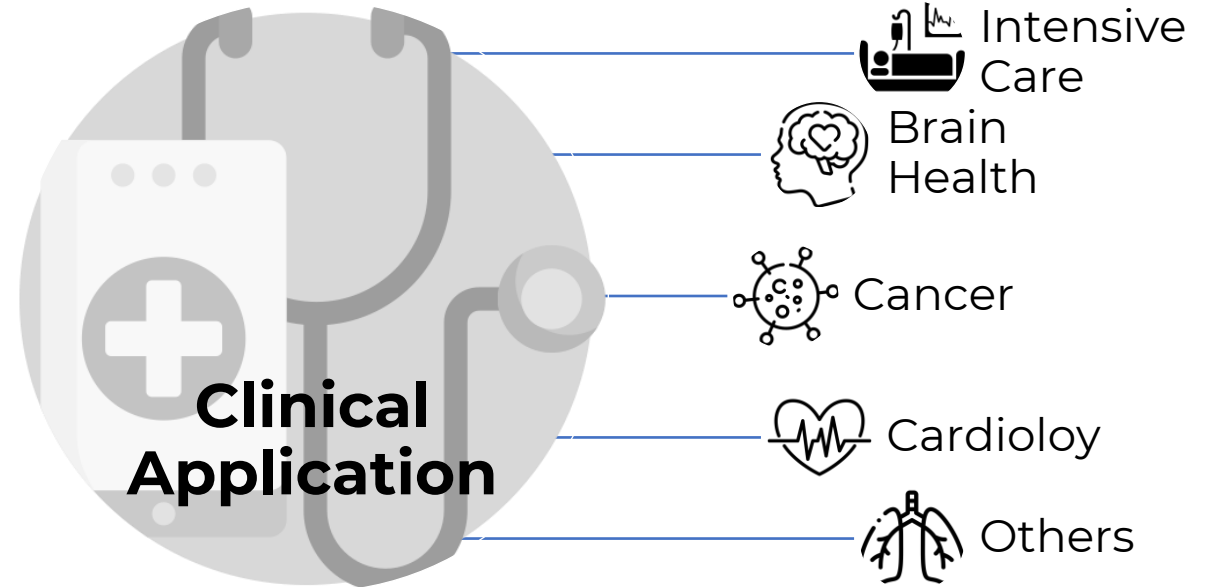


# Services

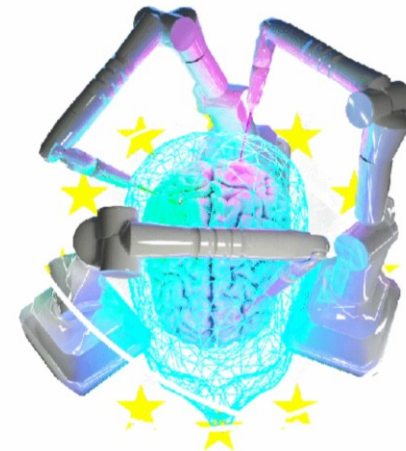
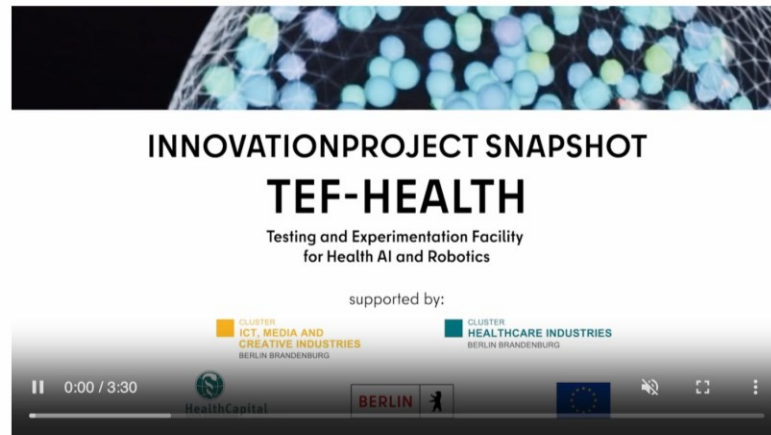
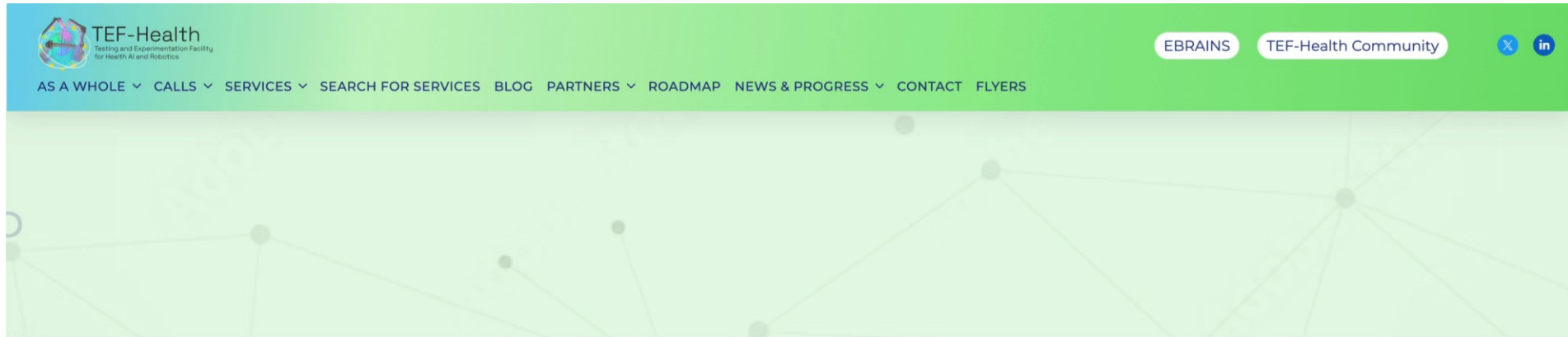


# Services – Physical Testing

-  Imaging
-  Robotics
-  Omics
-  Others

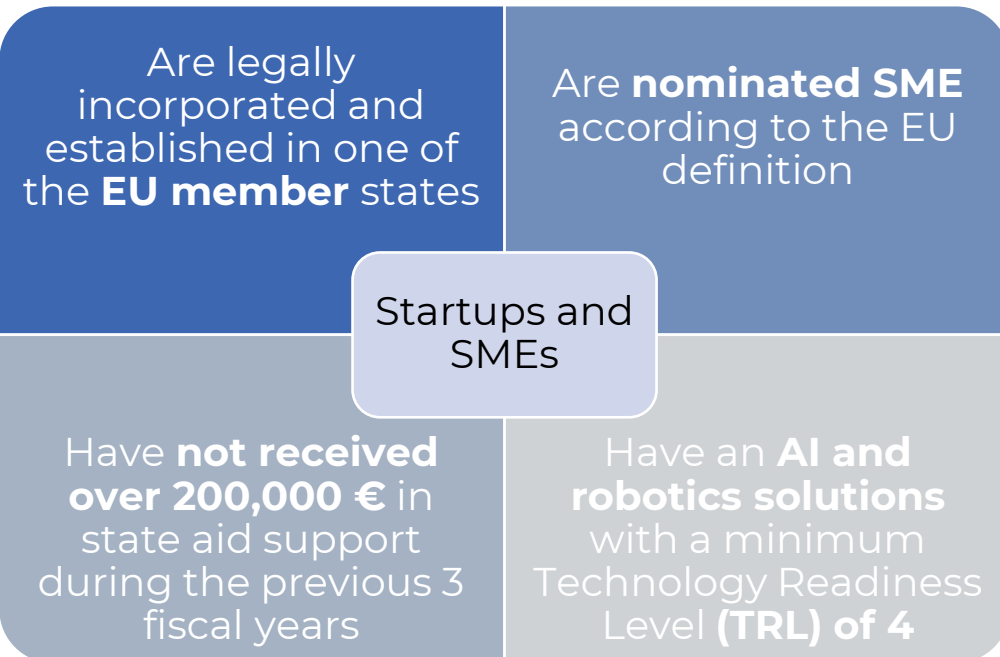
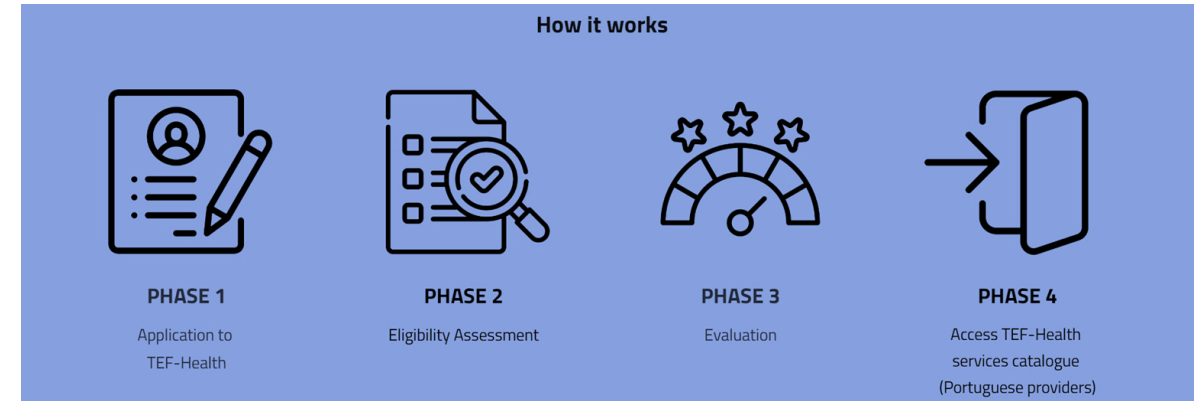


# TEF-HEALTH KNOWLEDGE GRAPH



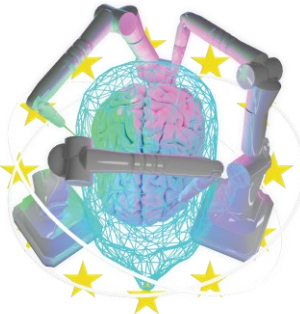
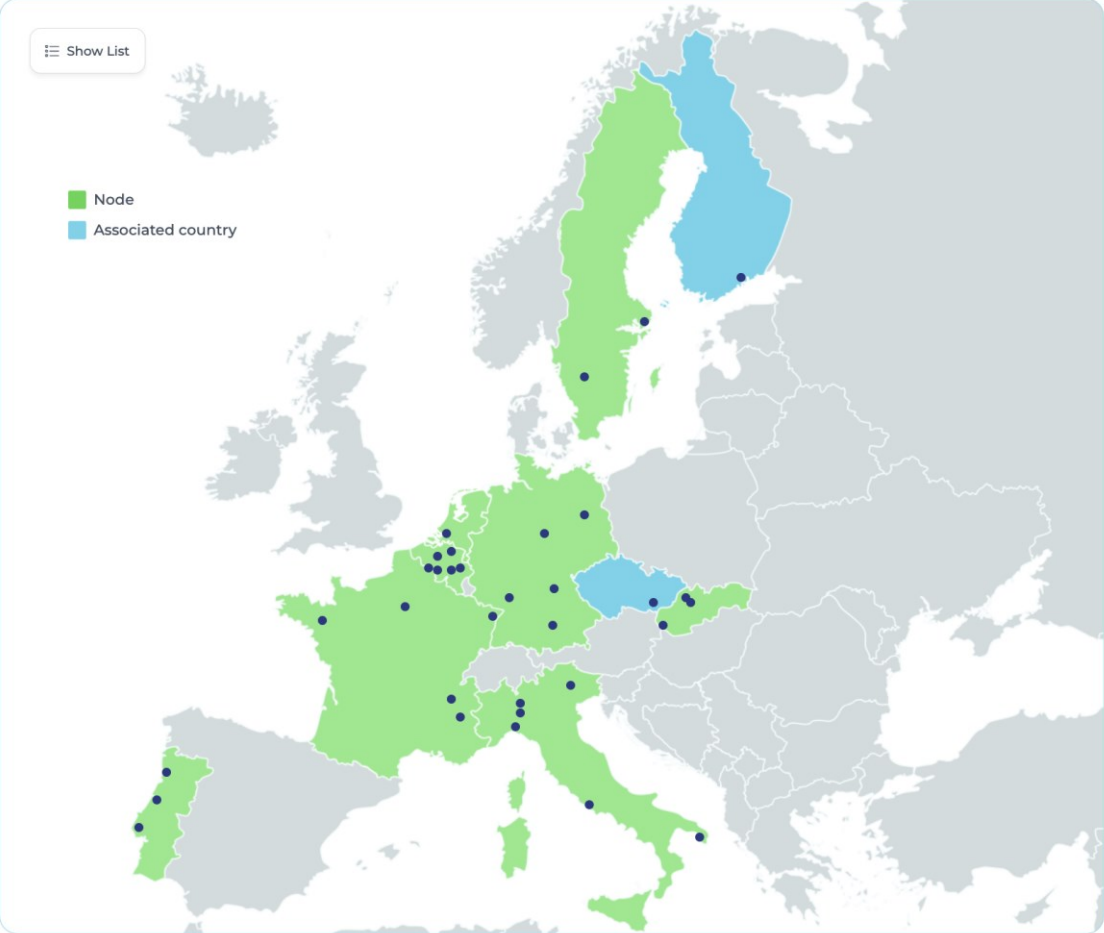
# TEF-Health Call:

→ Selected startups and SMEs from EU member states will receive state aid support








# TEF-HEALTH IN EUROPE



## TEF-Health

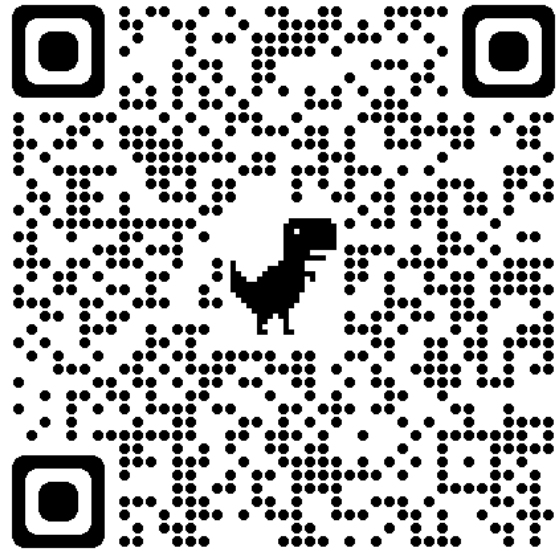
Testing and Experimentation Facility for Health AI and Robotics

 <b>The Netherlands</b> <ul style="list-style-type: none"><li>• Rotterdam   Node Lead</li></ul> EIT Health BeNe	 <b>Belgium</b> <ul style="list-style-type: none"><li>• Charleroi   Node Lead</li><li>• Liège</li><li>• Mol</li><li>• Mons</li><li>• Namur</li></ul> ISPPC   CETIC   BIOWIN WSL VITO MULTITEL UNamur   POLEM	 <b>Czechia</b> <ul style="list-style-type: none"><li>• Brno   Node Lead</li></ul> MU
---	---	--





# Apply Now!

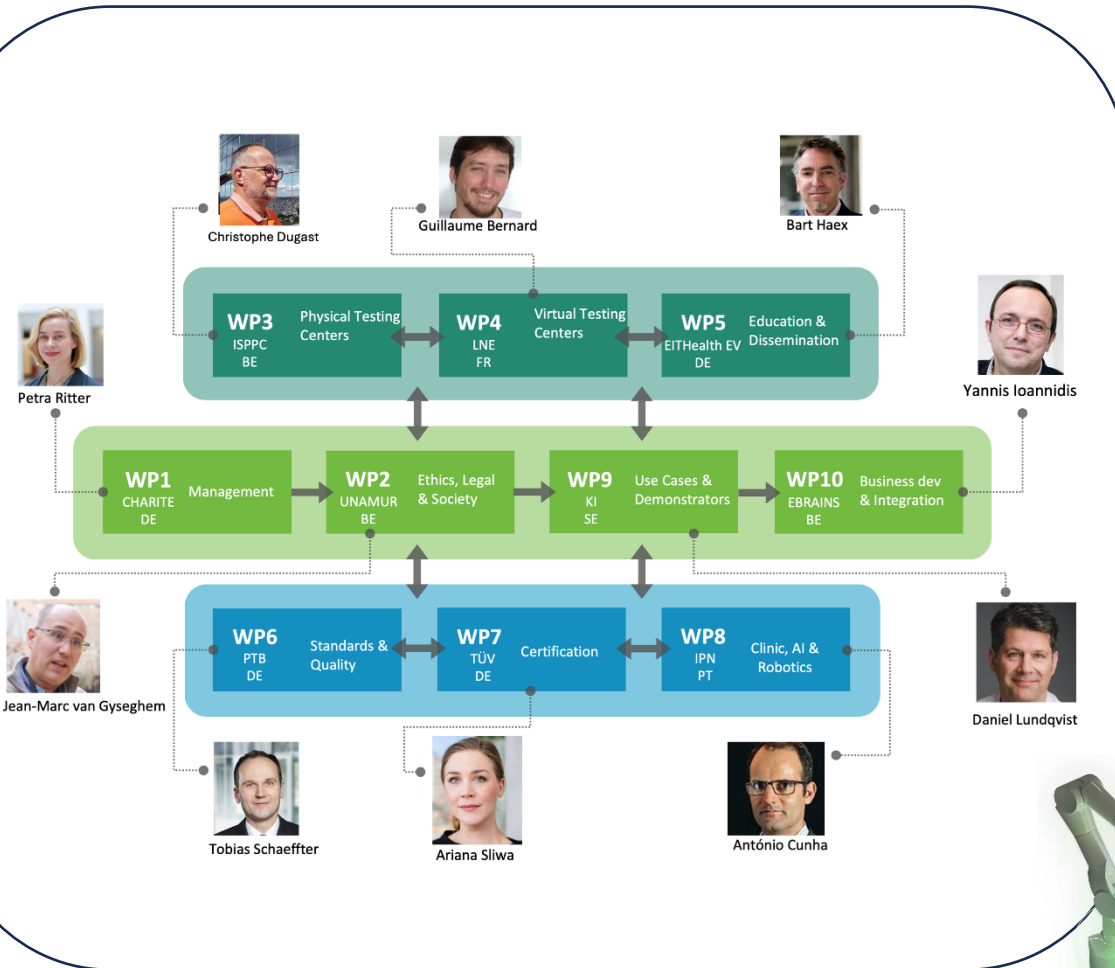


<https://tefhealth.eu>

## TEF-Health

Testing and Experimentation Facility  
for Health AI and Robotics

# TEF-Health Team



**GERMANY**

- Berlin: CHARITÉ, BPWT, VdTÜV, KI Park
- Braunschweig: PTB
- Erlangen: FAU
- Heidelberg: EIT H SI GmbH
- München: TUM, FHG, EIT HEALTH EV

**Belgium**

- Charleroi: ISPPC, CETIC, BIOWIN
- Liège: WSL
- Mol: VITO
- Mons: MULTITEL
- Namur: UNamur, POLEM

**FRANCE**

- Grenoble: CHUGA, UGA
- Lyon: HCL
- Paris: LNE, CEA, EIT Health Fr, HDH
- Rennes: CHU RENNES
- Strasbourg: IHUS

**ITALY**

- Genova: IGG, IIT
- Lecce: INNOVAAL
- Milano: POLIMI
- Pavia: UNIPV
- Povo: FBK
- Roma: ISS

**PORTUGAL**

- Coimbra: IPN, CHUC EPE
- Lisboa: SPMS, InnoStars
- Porto: CHSJ, HCP

**CZECHIA**

- BRNO: MU

**FINLAND**

- Helsinki: METROPOLIA, HELSINKI, HUS

**SLOVAKIA**

- Bratislava: UK BA, STUBA
- Martin: UHM
- Zilina: UNIZA

**SWEDEN**

- Boras: RISE
- Stockholm: KI

**THE NETHERLANDS**

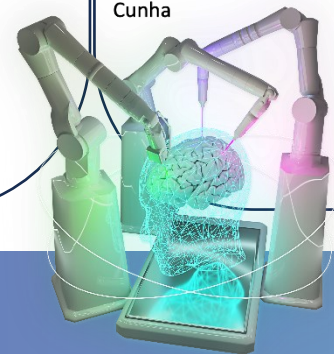
- Rotterdam: EIT Health BeNe

**PAN-EU**

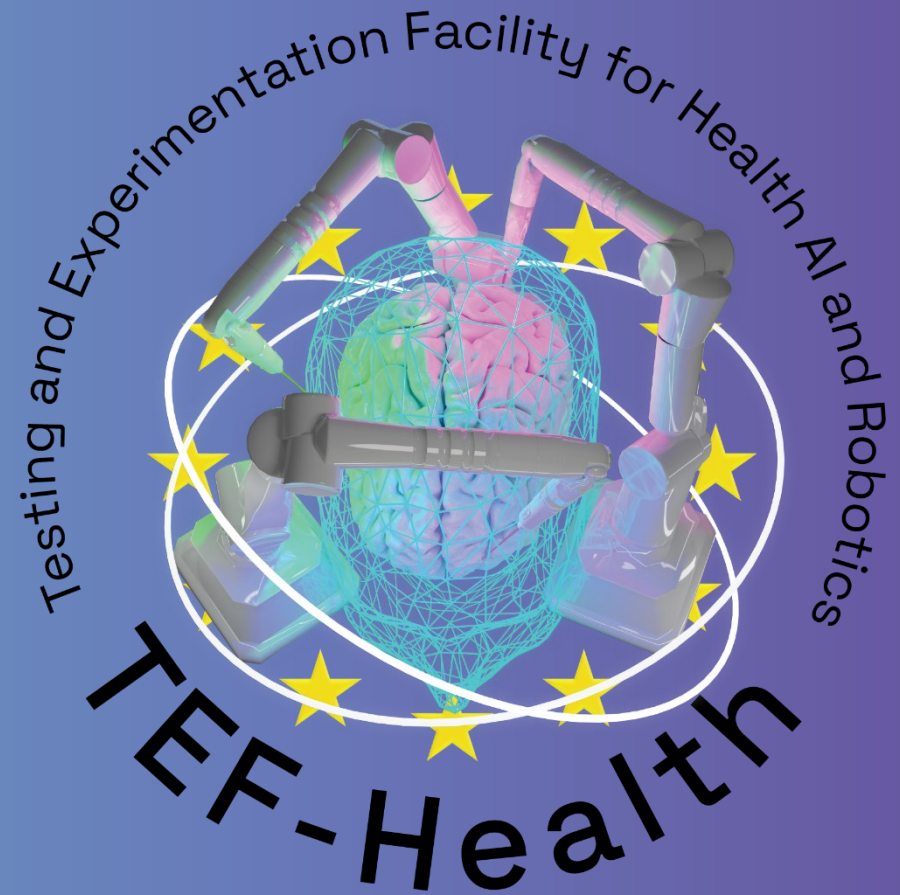
- Brussels: EBRAINS

**Team Members:**

- Stano Hroncek
- Daniel Lundqvist
- Yannis Ioannidis
- Michal Kozubek
- Kari Heikkilä



Thank you!







# Health Data Sweden

And the WG Digital Health

**HDS**  
Health Data Sweden



# Practical examples

## Working Groups



**NET**

**Networking the Networks**

Discover the guidelines for collaboration presented by the Working Groups during the EDIH Network Annual Summit.



**SUS**

**Sustainability**


The kickoff meeting was held on 10 July 2023. The date of the next meeting will be announced on this page.



**DATA**

**Data in Manufacturing**

The kick off meeting was held on 17 May 2023. The date of the next meeting will be announced on this page.

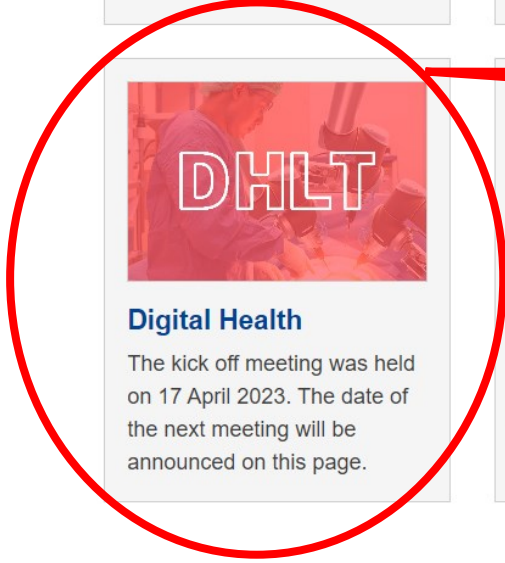


**PA4AI**


**Public Administration, with focus on AI**

This kick off meeting was held on 28 April 2023. The date of the next meeting will be announced on this page.

**Working groups to share information between EDIHs in different regions of Europe with common or specific interests**  
**NOTE! Their activities are independently organised**



**Prof. Meijer, Group Moderator of this Working Group**



**DHLT**

**Digital Health**


The kick off meeting was held on 17 April 2023. The date of the next meeting will be announced on this page.



**DBM**

**Digital Business Models**

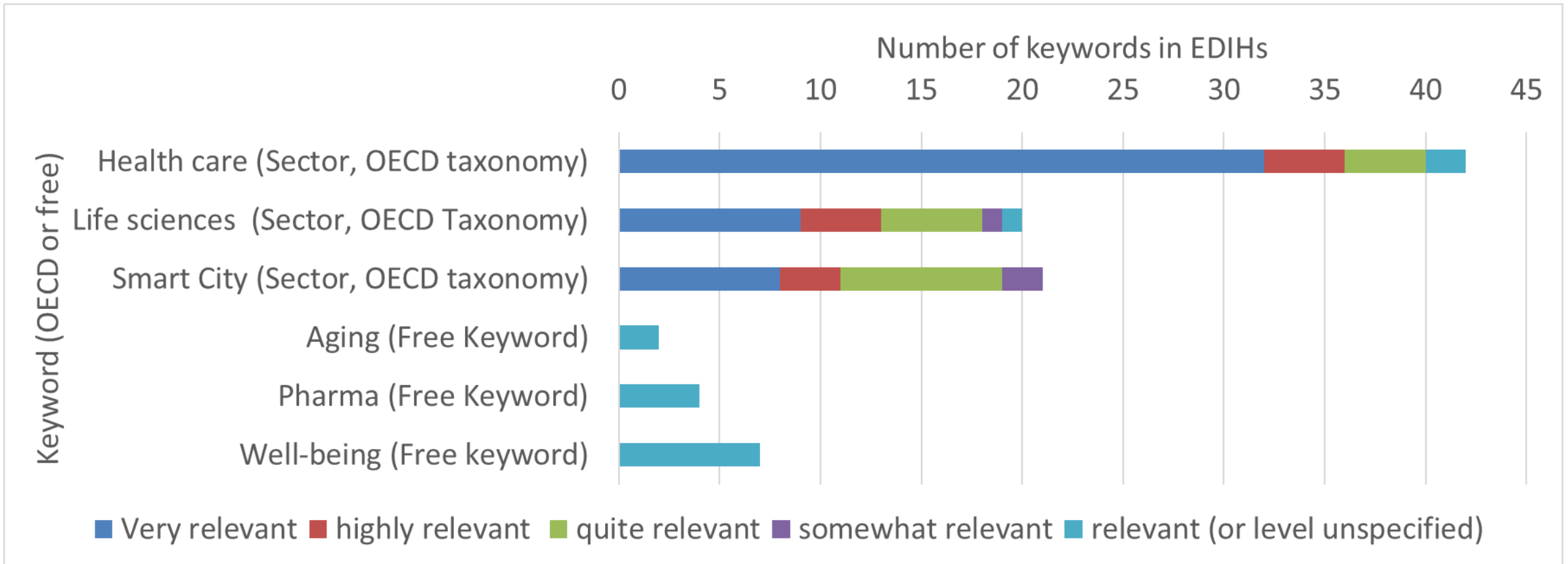
The kick-off meeting will be held on 22 September 2023.



**CONST**

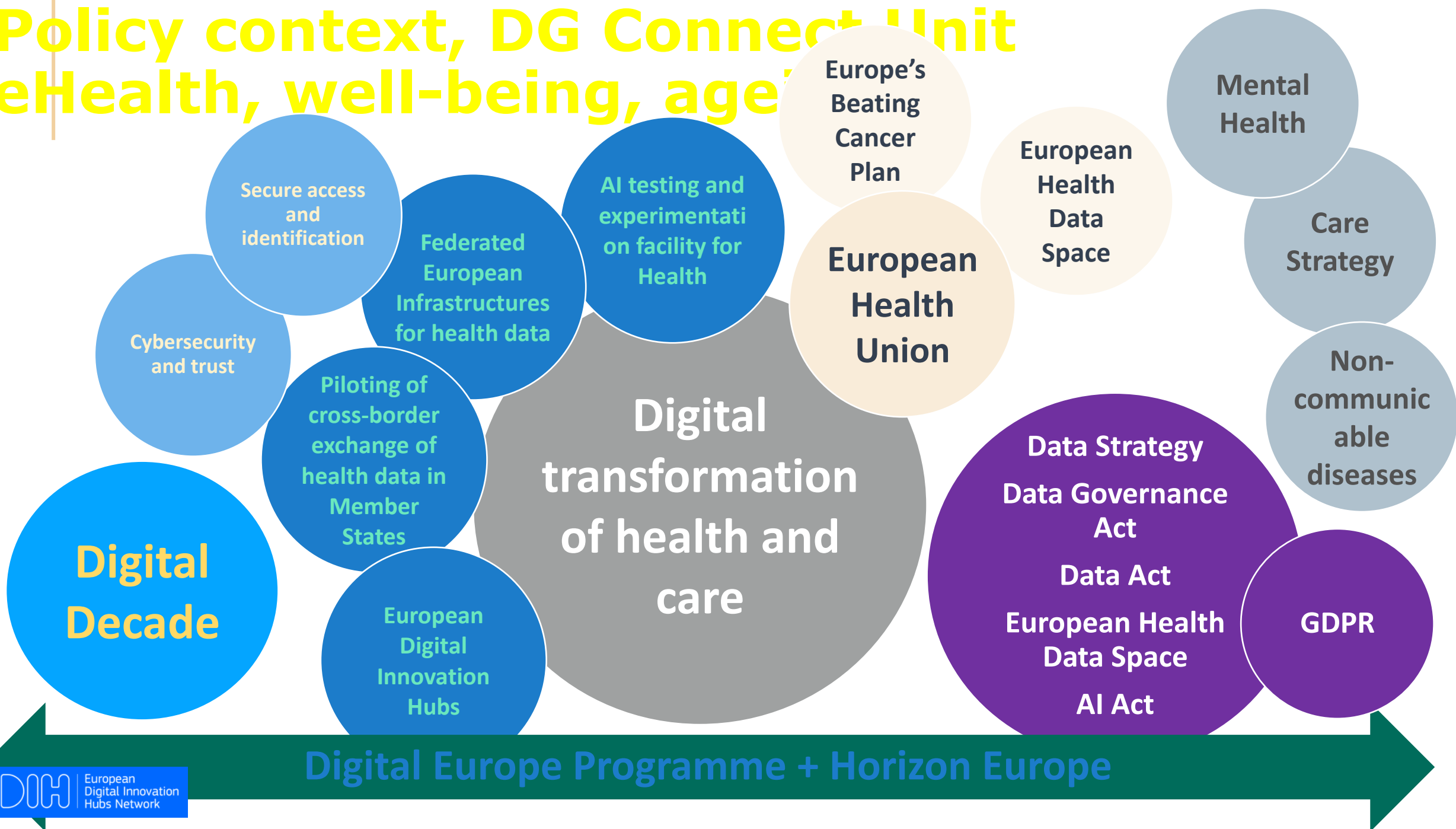
**Construction**

The kick-off meeting will be held on 29 September 2023.



\*) Breakdown to sub-industries in individual EDIHs: [https://european-digital-innovation-hubs.ec.europa.eu/system/files/2023-05/EDIH%20Summit%20-%20Workshop%20on%20Digital%20Health%20representation%20of%20EDIHs\\_31.5.2023.pdf](https://european-digital-innovation-hubs.ec.europa.eu/system/files/2023-05/EDIH%20Summit%20-%20Workshop%20on%20Digital%20Health%20representation%20of%20EDIHs_31.5.2023.pdf), Source: European Digital Innovation Hubs Network, EDIH Catalogue, <https://european-digital-innovation-hubs.ec.europa.eu/edih-catalogue>

# Policy context, DG Connect Unit eHealth, well-being, ageing



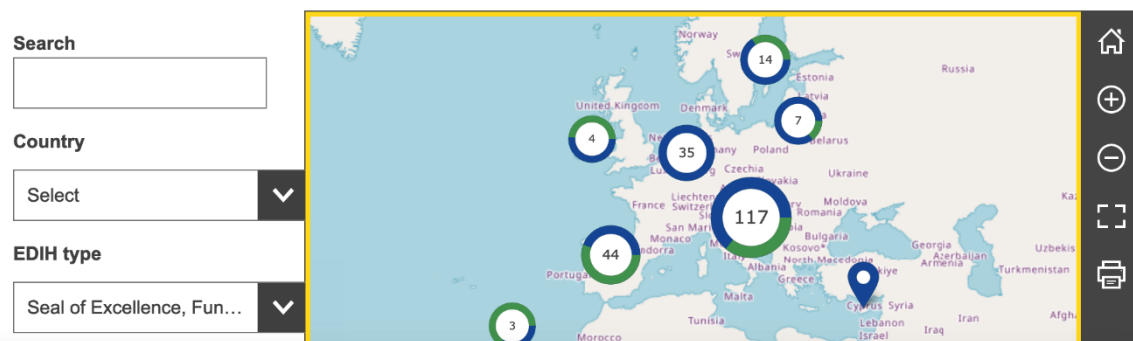
### EDIH Catalogue

Browse this catalogue to find essential information about the European Digital Innovation Hubs (EDIH), the one-stop shops assisting companies and public administration in addressing digital challenges. The EDIH Network is co-financed by the European Commission and EU Member States.

**Search.** Explore the complete EDIH catalogue, including hub descriptions.

**EDIH type.** Choose from three types of hubs: **Funded under Digital Europe programme:** Co-funded by the European Commission and Member States/Associated Countries. **Seal of Excellence:** Positively evaluated in a European competitive call but funded exclusively by national or regional resources. **Funded by other initiatives:** Digital innovation hubs with similar activities to EDIHs but not connected to the network. Users will need to select this type manually.

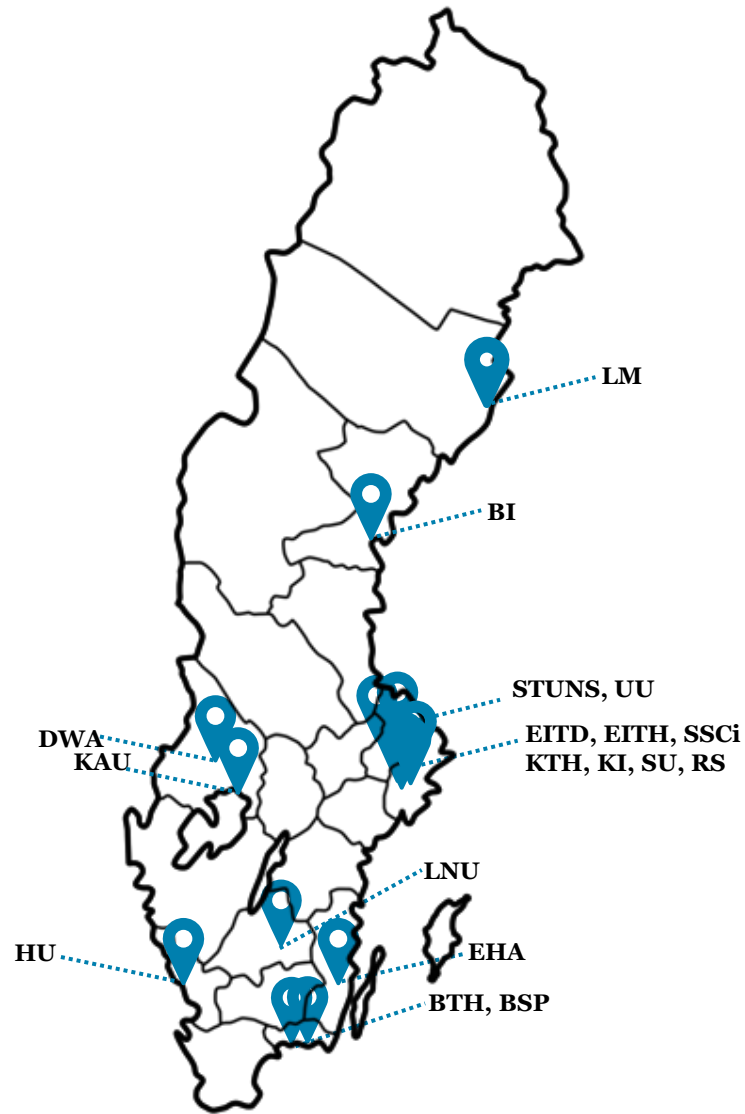
**Please note:** The search engine is based on standard filtering using fixed Boolean logic. For in-depth (e.g. cross-cutting) searches and analytics the full set of data is available under the "Download Data".



# Working Group Digital Health

- **Futurium Group  
(EDIH Digital Health)**
- **LinkedIn group  
(EDIH Health)**
- **Webinars**
- **Annual meetings**
- **Join? Ask the DTA!**

# Health Data Sweden



## Sweden situation:

- Health data is splintered
- Very good initiatives
- Difficult to scale
- HDS covers whole of Sweden
- Services catalogue making knowledge, test beds, data and infra accessible.
- No central data warehouse
- Need for a metadata catalogue



Co-funded by  
the European Union

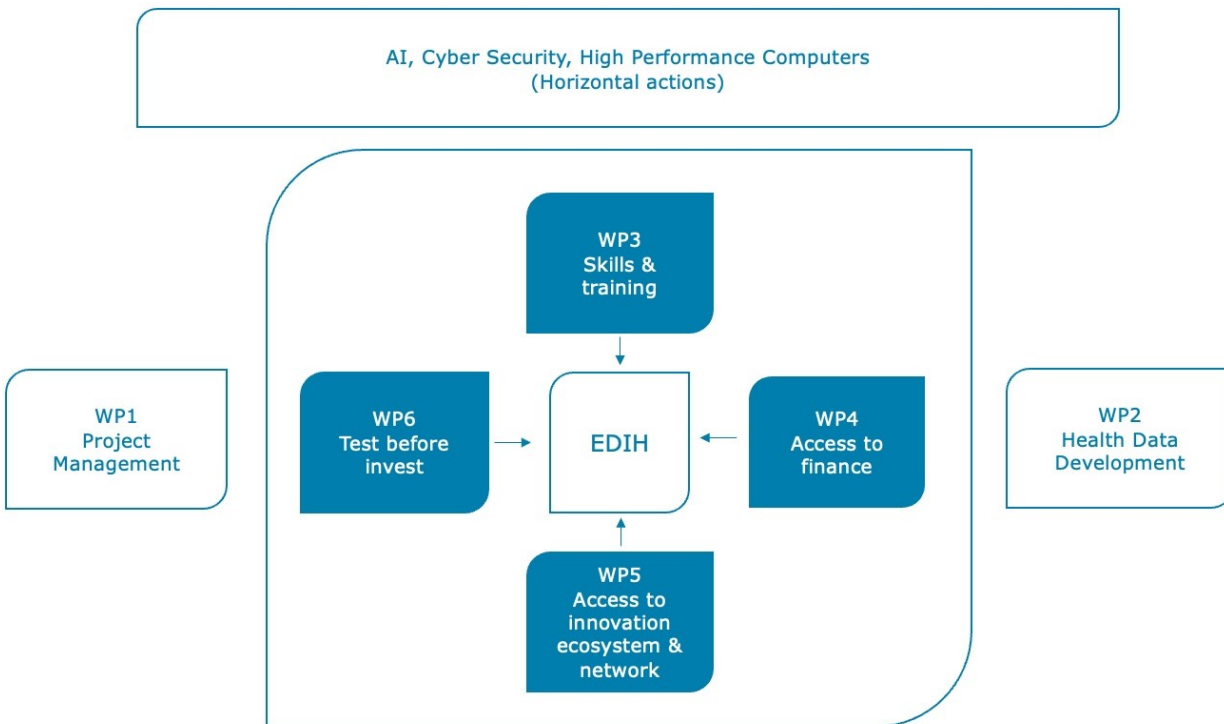
**VINNOVA**  
Sweden's Innovation Agency

**EDIH** | European  
Digital Innovation  
Hubs Network

**HDS** Health  
Data  
Sweden



# Modus Operandi



- A base layer to support all partners in their support of SMEs and public sector
- A portal to access the services for other SMEs and public sector
- A price list for services (some reduced, state support rules, transparent)
- Contribute a health data management, a wide definition, a citizen / patient perspective in the ecosystem
- Access to Sweden for European SMEs
- Access to Europe for Swedish SMEs



Co-funded by  
the European Union

**VINNOVA**  
Sweden's Innovation Agency

**EDIH** | European  
Digital Innovation  
Hubs Network

**HDS** Health  
Data  
Sweden

# Perspectives on Health Data

- Explosive growth of clinical data
  - Patient records to molecular and image profiling.
- Societal systems, as well as citizens themselves generate exponential amounts of life style, health and wellbeing data
- Game-changing prediction, decision support and care management tools
- A shift in services and responsibilities between the individual, service providers and the traditional care providers.
- Being able to access, combine and make sense of health data is increasingly what drives innovation in the health sector.
- Proven innovative solutions which ensure data security, can become enablers for the acceptance of increased utilisation of health data by regulating authorities as well as the public at large.



Co-funded by  
the European Union

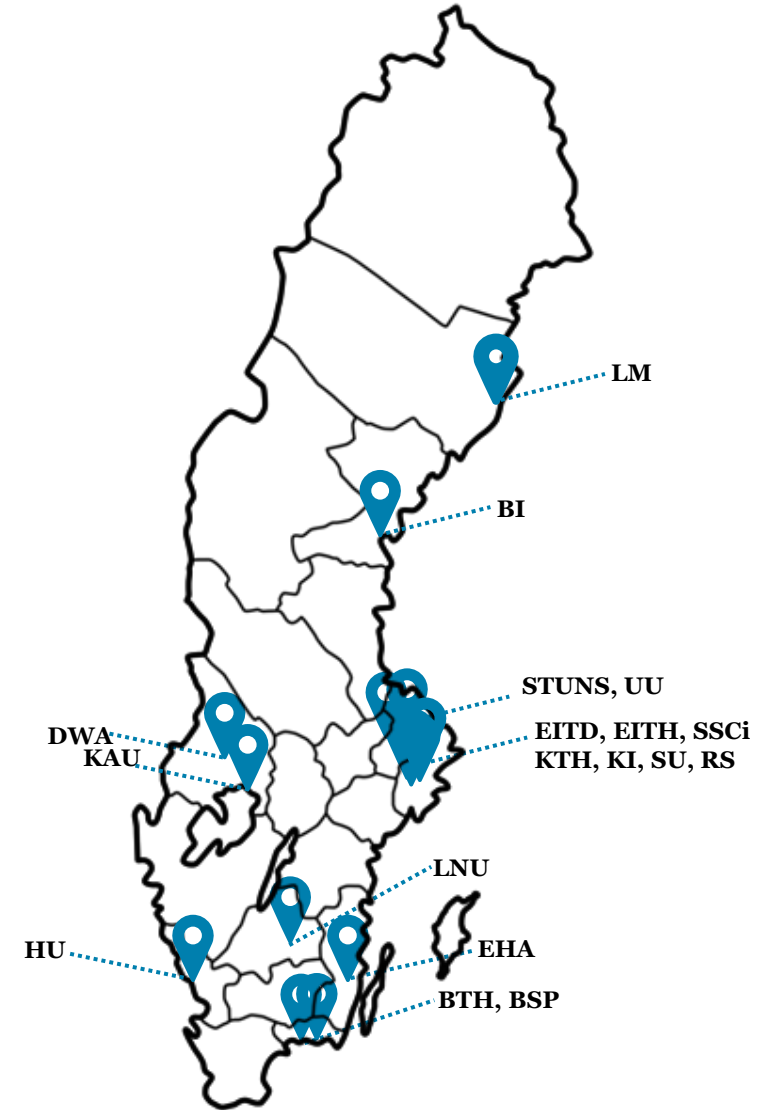
**VINNOVA**  
Sweden's Innovation Agency

**EDIH** | European  
Digital Innovation  
Hubs Network

**HDS** Health  
Data  
Sweden

# HDS Partners

Kungliga tekniska högskolan (KTH)  
Blekinge Tekniska Högskola (BTH)  
Blue Science Park (BSP)  
Bron Innovation (BI)  
DigitalWell Arena (DWA)  
eHealth Arena (EHA)  
EIT Digital (EITD)  
EIT Health (EITH)  
Halmstad Universitet (HU)  
Karlstads Universitet (KAU)  
Karolinska Institutet (KI)  
Linnéuniversitetet (LNU)  
Region Stockholm (RS)  
Region Västerbotten Livsmedicin (LM)  
Stockholms Universitet (SU)  
Stockholm Science City (SSCi)  
STUNS Life Science (STUNS)  
Uppsala Universitet (UU)



Co-funded by  
the European Union

**VINNOVA**  
Sweden's Innovation Agency

**EDIH** | European  
Digital Innovation  
Hubs Network

**HDS** Health  
Data  
Sweden

# HDS Partners



Co-funded by  
the European Union

**VINNOVA**  
Sweden's Innovation Agency

**EDIH** | European  
Digital Innovation  
Hubs Network

**HDS** Health  
Data  
Sweden

# HDS is many things to many people

- A set of (free) services for SMEs and public sector
- A force for change and maturation towards digitalisation of health and care
- A network that bridges many local initiatives
- A basis for wide offerings by local nodes
- A gateway into and from Europe



Co-funded by  
the European Union

**VINNOVA**  
Sweden's Innovation Agency

**EDIH** | European  
Digital Innovation  
Hubs Network

**HDS** Health  
Data  
Sweden



# Services catalogue

- [www.healthdatasweden.eu](http://www.healthdatasweden.eu)
- Film
  
- Long term: this could become an infrastructure
  - For Sweden? For EU? Relation to EHDS?
  - Public body as host?
  - Sustainability in funding

• <https://embed.kumu.io/56895d609f54e2d31829f6c6b877bfd6#tjaenstekatalog>



Co-funded by  
the European Union

**VINNOVA**  
Sweden's Innovation Agency

**EDIH** | European  
Digital Innovation  
Hubs Network

**HDS** Health  
Data  
Sweden

# AI Testing & Experimentation Facilities & EDIHs: Getting to Know Each Other

14:00

Welcome & Introduction

14:10

By sector/topic, presentation of TEF & a typical EDIH  
in the same

15:30

Discussion

15:50

Next Steps & Conclusions

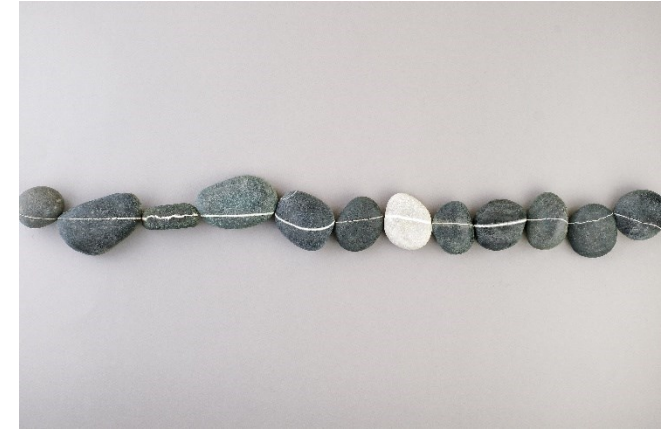
16:00

Closing



# Discussion

➤ **Organising a digital journey**



➤ **Establish coordination**

➤ **Additional topics for reflection?**



# AI Testing & Experimentation Facilities & EDIHs: Getting to Know Each Other

14:00

Welcome & Introduction

14:10

By sector/topic, presentation of TEF & a typical EDIH  
in the same

15:30

Discussion

15:50

Next Steps & Conclusions

16:00

Closing



# Next Steps

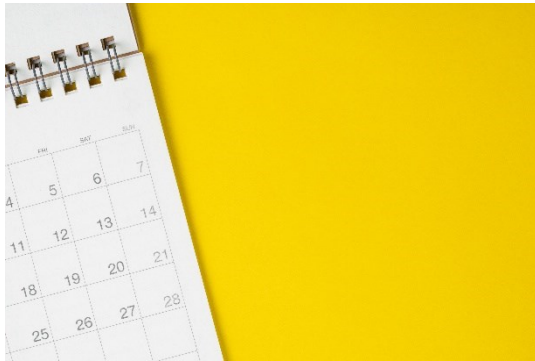
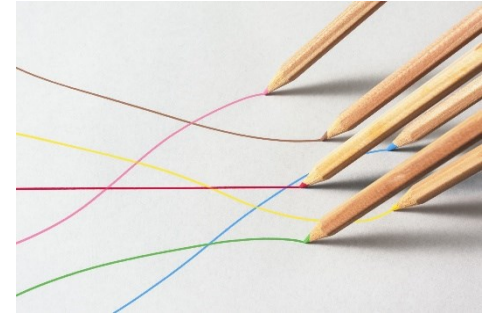
- Focus on what makes a client journey and identifying synergies & complementarities on:
  - Customers
  - Service offers
  - AI Ecosystem, including AI Act
- Start now, try – for each?



# Next Steps

## ➤ Closer collaboration between TEFs and EDIHs

- through sectoral/topical specialisation as priority
- Next meeting to dive deeper on collaboration by sector/topic



➤ timing May/June?

# Follow our webinar series



[EDIH website](#)



[LinkedIn](#)



Let us know how you will take the next steps, or any questions:

[CNECT-DIH@ec.europa.eu](mailto:CNECT-DIH@ec.europa.eu)

# Thank you



© European Union 2024

Unless otherwise noted the reuse of this presentation is authorised under the [CC BY 4.0](https://creativecommons.org/licenses/by/4.0/) license. For any use or reproduction of elements that are not owned by the EU, permission may need to be sought directly from the respective right holders.

