

# EDIH

---

## **European Digital Innovation Hubs Network**

---

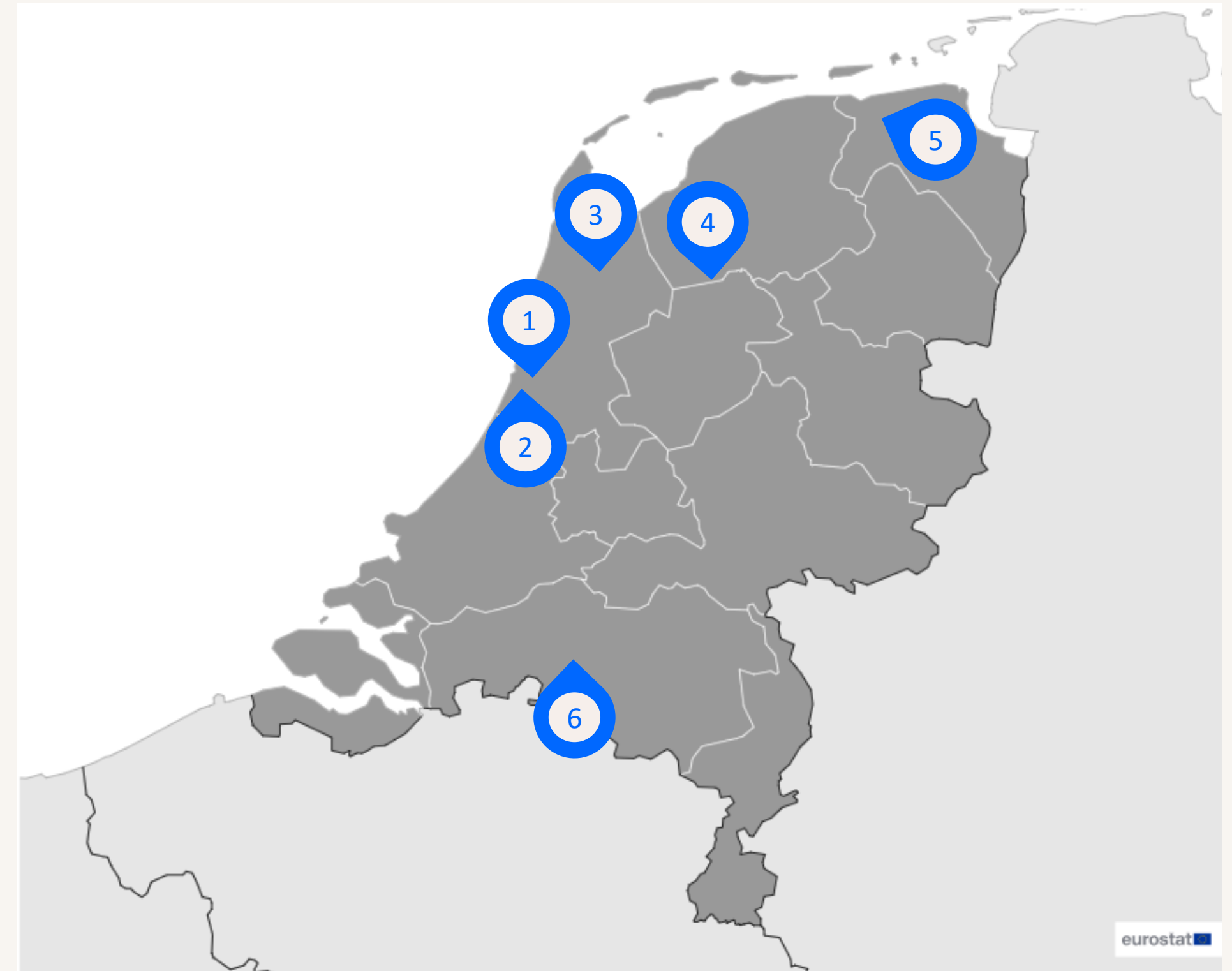
Driving the EU's digital transformation

---



# Netherlands

EDIH



**6**  
Members

**6/6 \*EDIHs**

**17**  
Sectors

## EDIHs in the Netherlands

Focus on a diverse range of sectors, including manufacturing and processing, metalworking, industrial production, construction and assembly, and automotives, demonstrating their commitment to digital innovation in manufacturing.

Possess cross-sector expertise, spanning fields such as food and beverages, healthcare, cultural and creative economy, agriculture, public administration, aeronautics, maritime, space, telecommunications, defence and more.

Actively engage in cutting-edge areas including life sciences, non-metallic materials and basic processes, as well as specialised sectors such as space, telecommunications, and agricultural biotechnology, fostering innovation and pushing the boundaries of technological advancements.

\*European Digital Innovation Hubs

\*Funded under Digital Europe Programme

# Network overview: 6 members – 6 EDIHs

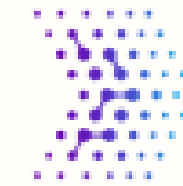


BOOST Robotic EastNL

Digitalzh

Digitalzh

European Digital  
Innovation Hub  
Northern Netherlands



EDIH NN

EDIH  
DIGITAL HUB  
NOORDWEST

EDIH-NWNL

KLIKOPMORGEN.nl  
EDIH Zuid-Nederland

EDIH-SNL

DUTCH SOCIETAL  
INNOVATIONHUB

VNG NL DIGI HUB



## 19 Technologies

Cover a wide array of technologies, with a focus on robotics, cyber-physical systems, sensors and vision processing systems, big data, artificial intelligence, and the internet of things, underscoring their commitment to automation, data analysis and digital innovation.

Actively engage in high-performance computing, media technologies, blockchain, quantum computing, and location-based applications, reflecting their dedication to driving innovation and technological advancements in these specialised fields.



## Services

Offer ecosystem building, prototyping, support, technology transfer, knowledge transfer, field trials, vocational training, regional development and finance.

Advise on public sector innovation, smart specialisation strategies, and the circular economy.

# Success stories

## Workshop: maturity of public innovation for societal impact

EDIH

DUTCH SOCIETAL  
INNOVATION HUB

### CUSTOMER

- Bij12
- [Website](#)
- Medium-sized enterprise (50 - 249 employees).

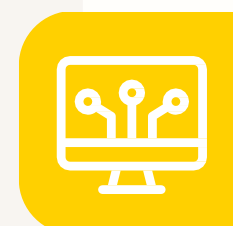
Bij  
12

Werkt voor provincies



### Service type

Training and skills development



### Technologies

Sensors and vision processing systems



### Sectors

Public administration



### Challenges

BIJ12 and the provinces **must monitor vegetation** in Natura 2000 areas every 12 years, but rapid environmental changes require more frequent monitoring. With fewer ecologists available, **traditional methods are unsustainable**. Despite over 10 innovation pilots using AI and image recognition, they struggle to achieve societal impact and scale beyond pilot stages.



### Solutions

- **Maturity assessment methodology:** developed a framework to assess the technological, societal and community readiness of innovation projects, helping identify gaps and blind spots.
- **Workshops and ecosystem analysis:** organised workshops and conducted ecosystem analyses to help stakeholders better understand and advance their innovation trajectories.
- **Do-it-yourself tools for practitioners:** participants received self-assessment tools to evaluate their projects' maturity and determine the next steps for scaling and societal impact.

# Success stories

## Workshop: maturity of public innovation for societal impact



Thanks to Dutch Societal Innovation Hub the SME achieved:

- **enhanced collaboration:**

SMEs involved in the innovation process learnt to work closely with public organisations, aligning their innovations with societal needs;

- **identification of blind spots:**

SMEs gained insight into where their innovation efforts were stagnating, helping them to refocus on areas requiring more attention;

- **access to broader networks:**

SMEs now given the opportunity to scale their solutions with the support of a community of organisations in nature monitoring.



### Results and benefits

#### Technological maturity level

The innovation trajectory for monitoring nature reached a technological readiness level of 6.

#### Improved innovation planning

The workshops provided participants with the tools and knowledge to identify gaps in their projects, leading to better planning and alignment with societal goals.

#### Strategic redirection

BIJ12 and the Province redirected resources from individual pilot projects to a larger innovation programme, ensuring broader collaboration and integration with key stakeholders.



### Lessons learnt

- ✓ **Involvement of stakeholders is critical:** innovation pilots often fail because key stakeholders and societal needs are not considered, which impacts adoption.
- ✓ **Alignment across organisations:** for scaling innovations, it is essential to align organisations with responsibilities in nature monitoring, to ensure collaboration.